



*Feel inspired*  
AT HOME

WITH YOUR *Trusted* LANDSCAPING SUPPLIER

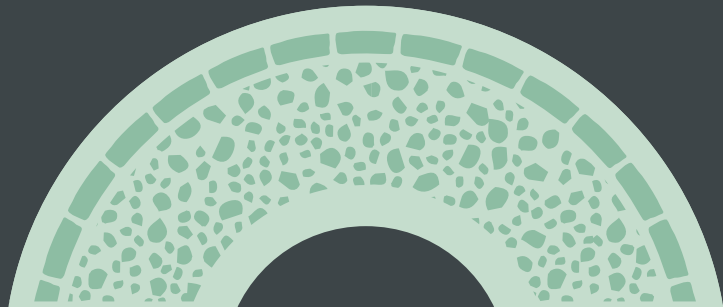
# Create your green escape

Creating the perfect garden means different things to different people... so if the outcome pleases you, we'd say that is a success! Enjoy finding some inspiration to create your green escape.

## Contents

Bringing joy to your garden again!

<b>4</b>	Patio & Paving
<b>40</b>	Block Paving
<b>44</b>	Natural Stone Paving
<b>48</b>	Porcelain Paving
<b>54</b>	Aggregates
<b>55</b>	Decorative Aggregates
<b>58</b>	Rockery
<b>59</b>	Essentials
<b>61</b>	Horticultural
<b>62</b>	Stepping Stones, Walling & Edging
<b>74</b>	Landscaping Essentials
<b>78</b>	Patio Construction & Care
<b>84</b>	Important Information



Est 1983

# Welcome

We are a family business that over the years has become one of the UK's market leaders in landscaping and gardening materials.

Our products help you create an inspiring garden that suits your lifestyle, whether it's the hub of family activity or your peaceful retreat away from the world.

Visit us at our showrooms in Bristol & Macclesfield

**Bowland Stone** (Bristol)

1 Cole Road, St. Philips,  
Bristol BS2 0UG

**t: 01179 557530**

e: [bristol@bowlandstone.com](mailto:bristol@bowlandstone.com)

**Bowland Stone** (Macclesfield)

Nab Works, Long Lane, Pott Shrigley,  
Macclesfield, Cheshire SK10 5SD

**t: 01625 574634**

e: [manchester@bowlandstone.com](mailto:manchester@bowlandstone.com)

Find even more inspiration at [www.bowlandstone.com](http://www.bowlandstone.com)

[www.bowlandstone.com](http://www.bowlandstone.com)

W E L C O M E





# Patio & Paving

Every style for every garden

<b>6</b>	Baroque
<b>8</b>	Cathedral
<b>12</b>	Chalice
<b>16</b>	Chapter
<b>18</b>	Cloister
<b>20</b>	Deckpave
<b>22</b>	Lakeland
<b>26</b>	Prestbury
<b>30</b>	Rectory
<b>32</b>	Sleeper
<b>33</b>	Somerset
<b>34</b>	Stratford
<b>36</b>	Sun Circle & Aurora
<b>38</b>	Victorian Setts
<b>39</b>	Windsor

**IMPORTANT INFORMATION**

All images shown in this brochure are for illustrative purposes only. Every effort is made to ensure accurate colour representation, however due to photographic and printing processes and varying light conditions, colours may not exactly match current production. We strongly recommend that colours are judged and chosen from actual materials and samples are sought from your local retailer.





# Baroque

6



Limestone

Baroque Limestone

# Baroque

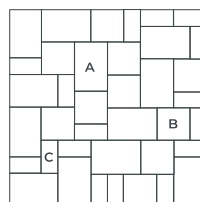
Baroque paving's sleek smooth lines and finely indented surface make it a very tactile product.

A style that will fit right in, giving you the perfect amount of imperfection to feel right at home. Baroque can be used alone to create a beautiful patio area or combined with a Baroque or Piccolo Oval for a striking effect.

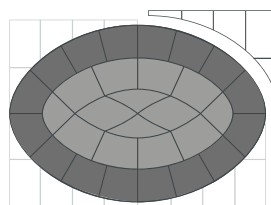


Baroque Oval Limestone

## PLANS



Baroque Paving 5.76m<sup>2</sup>



Corner  
infill set sold  
separately

- Piccolo Oval 2.4m
- Baroque Oval 3.2m

## Baroque & Piccolo Oval

The Oval has a unique shape with a beautiful finish that will look stunning in any style of garden. Two sizes are available, Baroque Oval and the smaller Piccolo Oval.

## PAVING PACK

Baroque Paving 5.76m<sup>2</sup>

Approx. Size:  
2400mm x 2400mm

Pallet weight:  
392.4 kg

Contents: 12 = 600 x 400 | 10 = 400 x 400 | 16 = 400 x 200

## OVAL PATIO PACKS

Piccolo Oval 2.4m

Approx. Size:  
2400mm x 1400mm

Approx. Size with infills:  
2800mm x 1600mm

Pallet weight: 190 kg

Infill pallet weight: 152 kg

Contents:  
14 specific shapes

Infill contents:  
16 specific shapes

Baroque Oval 3.2m

Approx. Size:  
3200mm x 2200mm

Approx. Size with infills:  
3200mm x 2400mm

Pallet weight: 390 kg

Infill pallet weight: 199 kg

Contents:  
30 specific shapes

Infill contents:  
20 specific shapes

## PAVING STONES

Size	Unit / m <sup>2</sup>	Unit weight	m <sup>2</sup> / pallet	Unit / pallet	Pallet weight
600 x 400 (A)	4.2	15.5	6	25	387.5
400 x 400 (B)	6.3	11	8	50	550
200 x 400 (C)	12.5	5.5	4	50	275

Thickness: 32mm



# Cathedral

8



Weathered Moss Weathered York Barley

COLOURS

Cathedral Weathered Moss



# Cathedral

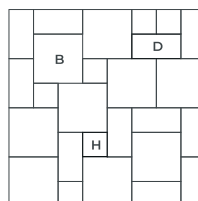
The Cathedral paving range has a distinct rough-hewn texture that has been blended into three natural tones.

The weathered textures and tones of our Cathedral paving work beautifully with contemporary and traditional houses.

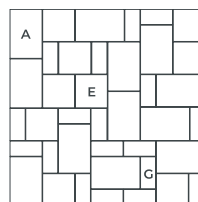


Cathedral Barley; Cathedral circle

## PLANS



Cathedral 5.76m<sup>2</sup>



Cathedral 7.29m<sup>2</sup>

## Cathedral Circle

Complete your patio with our circular feature available in 3 sizes or individual pieces. See page 10.

## PAVING PACKS

### Cathedral 5.76m<sup>2</sup>

Approx. Size:  
2400mm x 2400mm

Pallet weight:  
484.4 kg

Contents: **9** = 600 x 600 | **11** = 600 x 300 | **6** = 300 x 300

### Cathedral 7.29m<sup>2</sup>

Approx. Size:  
2700mm x 2700mm

Pallet weight:  
586 kg

Contents: **12** = 675 x 450 | **9** = 450 x 450 | **18** = 450 x 225

## PAVING STONES

Sizes	Unit / m <sup>2</sup>	Unit weight	m <sup>2</sup> / pallet	Unit / pallet	Pallet weight
675 x 450 (A)	3.3	25	7.6	25	625
600 x 600 (B)	2.8	30	8.9	25	750
600 x 450 (C) †	3.7	22	13.5	50	1100
600 x 300 (D)	5.5	14.5	9.1	50	725
450 x 450 (E)	5	15.5	10	50	775
450 x 300 (F) †	7.4	9.5	6.8	50	475
450 x 225 (G)	10	8	5	50	400
300 x 300 (H)	11	7.5	4.5	50	375

† Made to order (MTO)

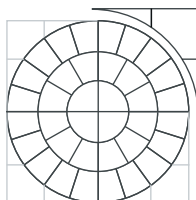
Thickness: 38mm

# Cathedral Circle

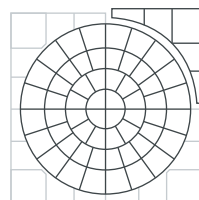
The Cathedral Circle is a perfect and flexible solution to creating a striking feature.

Available in various sizes and easily integrated into your patio using our corner infill sets.

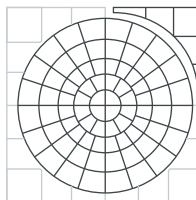
## PLANS



Cathedral Circle  
1.8m (dia)



Cathedral Circle  
2.56m (dia)



Cathedral Circle  
3.48m (dia)

Corner infill sets  
sold separately



## Complement

Meadow Walling Blocks perfectly complement Cathedral Paving, creating an authentic, rustic look.



Cathedral Paving/Circle, Barley/Meadow Walling Barley





**COLOURS**

		
Weathered Moss	Weathered York	Barley

## Specifications

### CIRCLE PATIO PACKS

#### Cathedral Circle 1.8m

**Approx. Size:**  
1800mm (dia)

**Pallet weight:** 216 kg

**Contents:**  
36 specific shapes

**Approx. Size with infills:**  
1800mm x 1800mm

**Infill pallet weight:** 69 kg

**Infill contents:**  
12 specific shapes

#### Cathedral Circle 2.56m

**Approx. Size:**  
2560mm (dia)

**Pallet Weight:** 416 kg

**Contents:**  
56 specific shapes

**Approx. Size with infills:**  
3000mm x 3000mm

**Infill pallet weight:** 317 kg

**Infill contents:**  
20 specific shapes

#### Cathedral Circle 3.48m

**Approx. Size:**  
3480mm (dia)

**Pallet Weight:** 754 kg

**Contents:**  
76 specific shapes

**Approx. Size with infills:**  
3600mm x 3600mm

**Infill pallet weight:** 340 kg

**Infill contents:**  
20 specific shapes

# Chalice

12



Honey Brown



Mellow Gold



Welsh Slate\*

COLOURS

Chalice Paving, Honey Brown



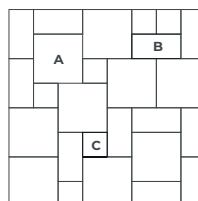
# Chalice

Our Chalice paving recreates the look and feel of natural stone with a gentle, riven surface.

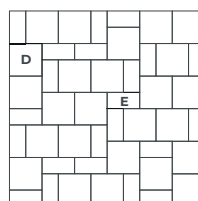
Lovingly crafted on all surfaces, so when an edge is visible the patio has the realistic appearance of age-old stone. Chalice is available in three unique colours, Honey Brown, Mellow Gold and Welsh Slate. The colours combine various hues to produce a stunning, warming blend that recreates the appearance of natural stone.



## PLANS



Chalice Paving 5.76m<sup>2</sup>\*



Chalice Paving 7.29m<sup>2</sup>\*

## PAVING PACK

### Chalice 5.76m<sup>2</sup>\*

Approx. Size:  
2400mm x 2400mm

Pallet weight:  
405.5 kg

Contents: **9** = 600 x 600 | **11** = 600 x 300 | **6** = 300 x 300

\*Not available in Welsh Slate.

### Chalice 7.29m<sup>2</sup>\*

Approx. Size:  
2700mm x 2700mm

Pallet weight:  
450.5 kg

Contents: **25** = 450 x 450 | **22** = 450 x 225

## PAVING STONES

Size	Unit / m <sup>2</sup>	Unit weight	m <sup>2</sup> / pallet	Unit / pallet	Pallet weight
600 x 600 (A)*	2.8	25.5	10.7	30	765
600 x 300 (B)*	5.5	13	10.9	60	780
300 x 300 (C)*	11	6	5.5	60	360

Thickness: 35mm

450 x 450 (D)	5	12.5	16	80	1000
450 x 225 (E)	10	6.5	8	80	520

\*Not available in Welsh Slate.

Thickness: 32mm

## Chalice Circle

Why not add another dimension to your Chalice Paving by adding a Chalice Circle feature.

# Chalice Circle

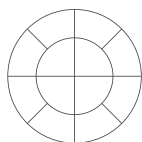
Our Chalice Circle is available in all three colours and adds another dimension to your Chalice Paving.

Available on its own or complete with corner infill set(s).

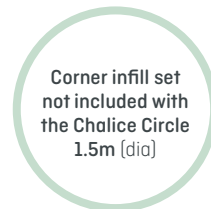
14



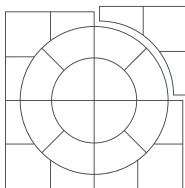
## PLANS



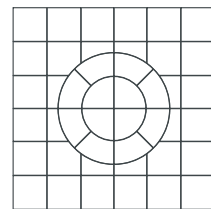
Chalice Circle  
1.5m (dia)



Corner infill set  
not included with  
the Chalice Circle  
1.5m (dia)



Chalice Circle 3.24m<sup>2</sup>  
(with corner infill set)



Chalice Circle 7.29m<sup>2</sup>  
(with corner infill set & paving)

## Complement

Give your patio that 'edge', finish off with our perimeter edging creating a neat, striking border.



Chalice Circle and Paving, Honey Brown



CIRCLE PATIO PACKS

Chalice Circle 1.5m

Approx. Size:  
1500mm (dia)

Pallet weight:  
134 kg

Contents: 12 Specific shapes

Chalice Circle 3.24m<sup>2</sup> Pack

Including corner infill set

Approx. Size:  
1800mm x 1800mm

Pallet weight:  
210 kg

Contents: 24 Specific shapes

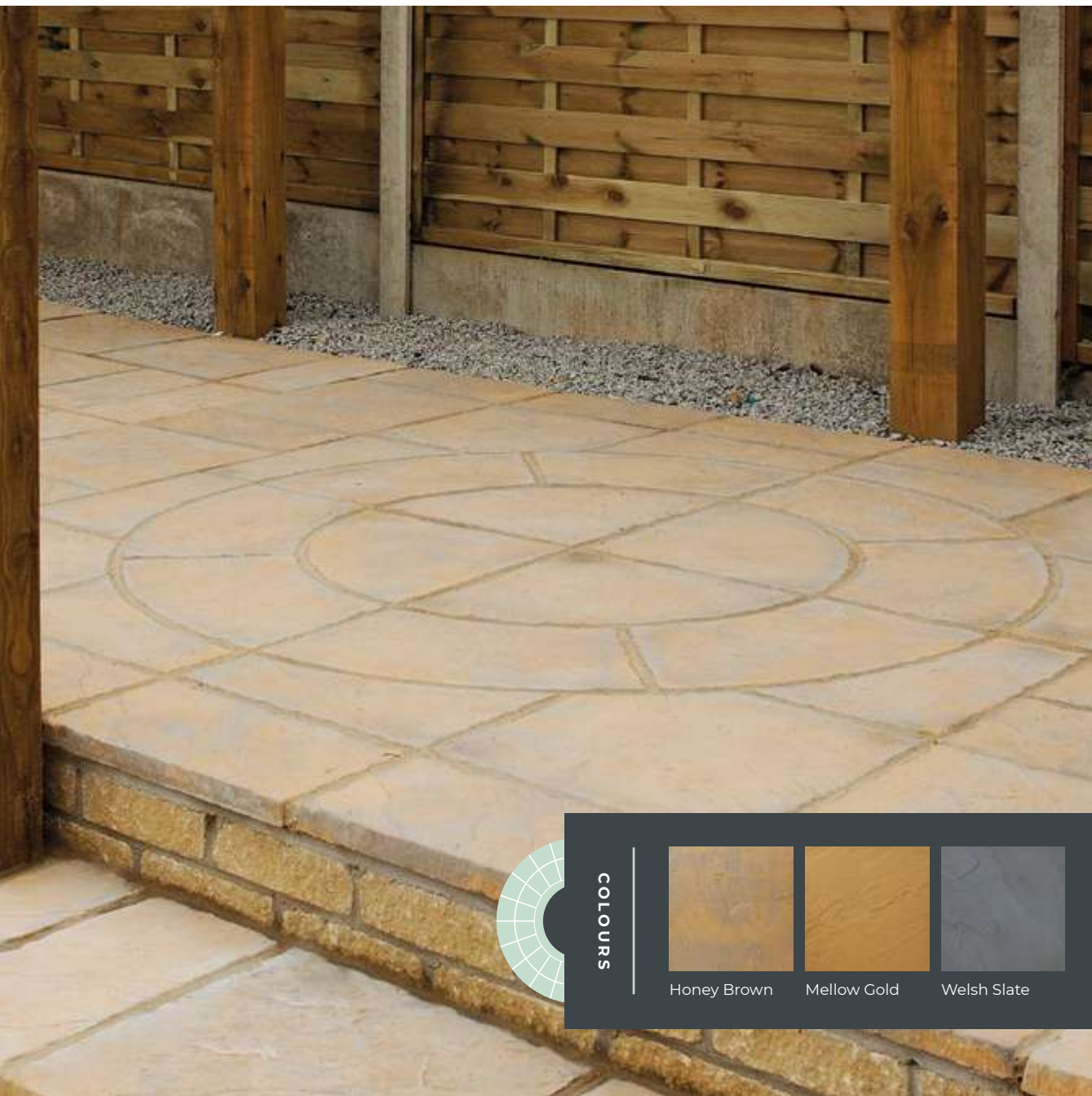
Chalice Circle 7.29m<sup>2</sup> Pack

Including corner infill set & paving

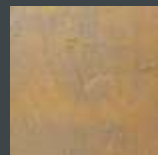
Approx. Size:  
2700mm x 2700mm

Pallet weight:  
462 kg

Contents: 44 Specific shapes



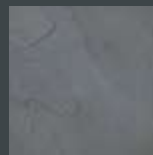
COLOURS



Honey Brown



Mellow Gold



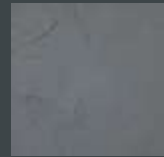
Welsh Slate

# Chapter

16



Barley



Welsh Slate

COLOURS



Chapter Paving, Barley



# Chapter

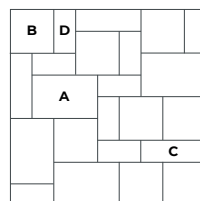
Chapter paving's subtle worn-smooth riven appearance is suitable for many spaces.

With its wide variety of shapes and sizes it allows you to add your own splash of inspiration. Chapter Paving is available in four individual sizes or our convenient paving pack.

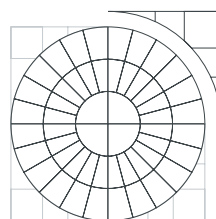
Our Chapter circle allows stunning circle designs to be incorporated into your patio and is available to purchase completely individually giving you complete flexibility of design.



## PLANS



Chapter Paving 5.06m<sup>2</sup>



Chapter Circle 1m, 2m, 3m (dia)

Corner infill set only for Chapter 3m circle

## Chapter Circle

You can also combine our Chapter circle with our walling products to create stunning steps.

## PAVING PACK

### Chapter Paving 5.06m<sup>2</sup>

Approx. Size:  
2250mm x 2250mm

Pallet weight:  
365.4 kg

Contents: 4 = 750 x 500 | 3 = 750 x 250 | 8 = 500 x 500 | 8 = 500 x 250

## CIRCLE PATIO PACKS

Chapter Circles currently not available in welsch slate only barley.

### Chapter Circle 2m<sup>†</sup>

Approx. Size:  
2000mm (dia)

Pallet weight:  
270 kg

### Chapter Circle 3m<sup>†</sup>

Corner Infill set is sold separately

Approx. Size:  
3000mm (dia)

Pallet weight:  
622 kg

### Chapter Circle 4m<sup>†</sup>

Approx. Size:  
4000mm (dia)

Pallet weight:  
1110 kg

## PAVING STONES

Size	Unit / m <sup>2</sup>	Unit weight	m <sup>2</sup> / pallet	Unit / pallet	Pallet weight
750 x 500 (A) †	2.7	26	7.4	20	520
750 x 250 (B) †	5.35	12.8	7.5	40	512
500 x 500 (C) †	4	17.2	10	40	688
500 x 250 (D) †	8	8.8	5	40	352

† Made to order (MTO)

Thickness: 32mm

# Cloister

18



Weathered Slate



Barley

COLOURS

Cloister Paving Weathered Slate

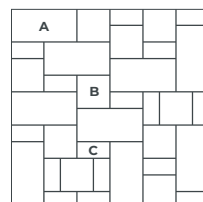
# Cloister

Cloister Paving has a sawn edge enhancing its appearance of 'old stone', and is available in two colours with a natural appearance. Three different sizes allow for traditional paving patterns as well as contemporary designs.

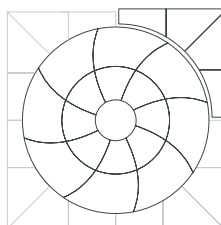
With its natural worn look Cloister paving fits in instantly to its surroundings and works in harmony with any type of garden. From a family friendly courtyard garden to a feature area in a bigger plot it is the perfect choice.



## PLANS



Cloister Paving 5.20m<sup>2</sup>



Catherine Wheel

Corner infill set sold separately

## Catherine Wheel

**Looking for something different?**  
The Catherine Wheel provides a stunning visual display for your garden. Corner Infill Sets are available to allow you to integrate a Catherine Wheel into a paved area and works well with Cloister paving. Stepping stones are also available to complete the look.

## PAVING PACK

Cloister 5.20m<sup>2</sup>

Approx. Size:  
2280 x 2280mm

Pallet weight:  
466 kg

Contents: **9** = 760 x 380 | **10** = 380 x 380 | **16** = 190 x 380

## CIRCLE PATIO PACKS

Catherine wheel

Corner infill sets

Approx. Size:  
2090mm (dia)

Approx. Size with infills:  
2280mm x 2280mm

Pallet weight: 315 kg

Infill pallet weight: 174 kg

## PAVING STONES

Size	Unit / m <sup>2</sup>	Unit weight	m <sup>2</sup> / pallet	Unit / pallet	Pallet weight
760 x 380 (A) †	3.5	25	7.1	25	625
380 x 380 (B) †	6.9	12.5	7.2	50	625
190 x 380 (C) †	13.9	6.5	3.6	50	325

† Made to order (MTO)

Thickness: 38mm



# Deckpave

20



Brown Oak

COLOUR

Deckpave, Brown Oak

# Deckpave

Our natural looking, durable Deckpave tiles will add flair to any garden patio.

They have many advantages to traditional decking including durability, and less upkeep than real wood.



## Complement

The rich brown textured wood look of our Deckpave teamed perfectly with our light coloured cotswold chipping and bright pops of colour from pots and plants.



## Specifications

PAVING STONES	Unit / m <sup>2</sup>	Unit weight	m <sup>2</sup> / pallet	Unit / pallet	Pallet weight
Size					
500 x 500	4	19.1	6.25	25	477.5

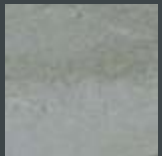
Thickness: 35mm



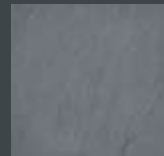


# Lakeland

22



Cumbrian Slate



Welsh Slate

COLOURS

Lakeland Cumbrian Slate



# Lakeland

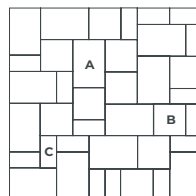
Our ever-popular Lakeland range brings the unmistakable look and texture of natural slate to your garden.

Lakeland Paving is available in classic Cumbrian Slate and the more intense Welsh Slate in our convenient paving packs or individual sizes can be made to order.

For a classic natural slate look our Lakeland range is perfect. If you turn to page 66 you can find out more about our accompanying Lakeland Walling offering you a wide range of possibilities when creating your outdoor space.



## PLANS



Lakeland 5.76m<sup>2</sup>

## PAVING PACK

Lakeland 5.76m<sup>2</sup>

Approx. Size:  
2400 x 2400mm

Pallet weight:  
475 kg

Contents: 12 = 600 x 400 | 10 = 400 x 400 | 16 = 400 x 200

## PAVING STONES

Size	Unit / m <sup>2</sup>	Unit weight	m <sup>2</sup> / pallet	Unit / pallet	Pallet weight
600 x 400 (A) †	4.2	20.12	6.0	25	503
400 x 400 (B) †	6.3	13	8.0	50	650
400 x 200 (C) †	12.5	6.5	4.0	50	325

† Made to order (MTO)

Thickness: 35mm

## Complement

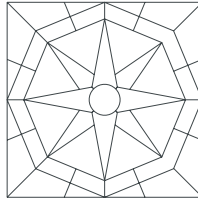
Use our Lakeland Edging Stones as a coping and create versatile planters a top your wall.

# Lakeland Star & Sun

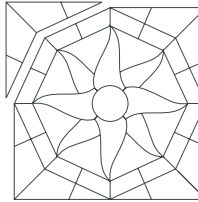
Our Lakeland Star and Sun Patio Packs are the perfect feature to create a striking contemporary design that will bring the wow factor to your garden.

Both come complete in a mix of two dramatic colours, Cumbrian Slate and Gold, with our Star design now also available in a striking combination of Welsh Slate and Portland Grey.

## PLANS



Lakeland Star 5.76m<sup>2</sup>

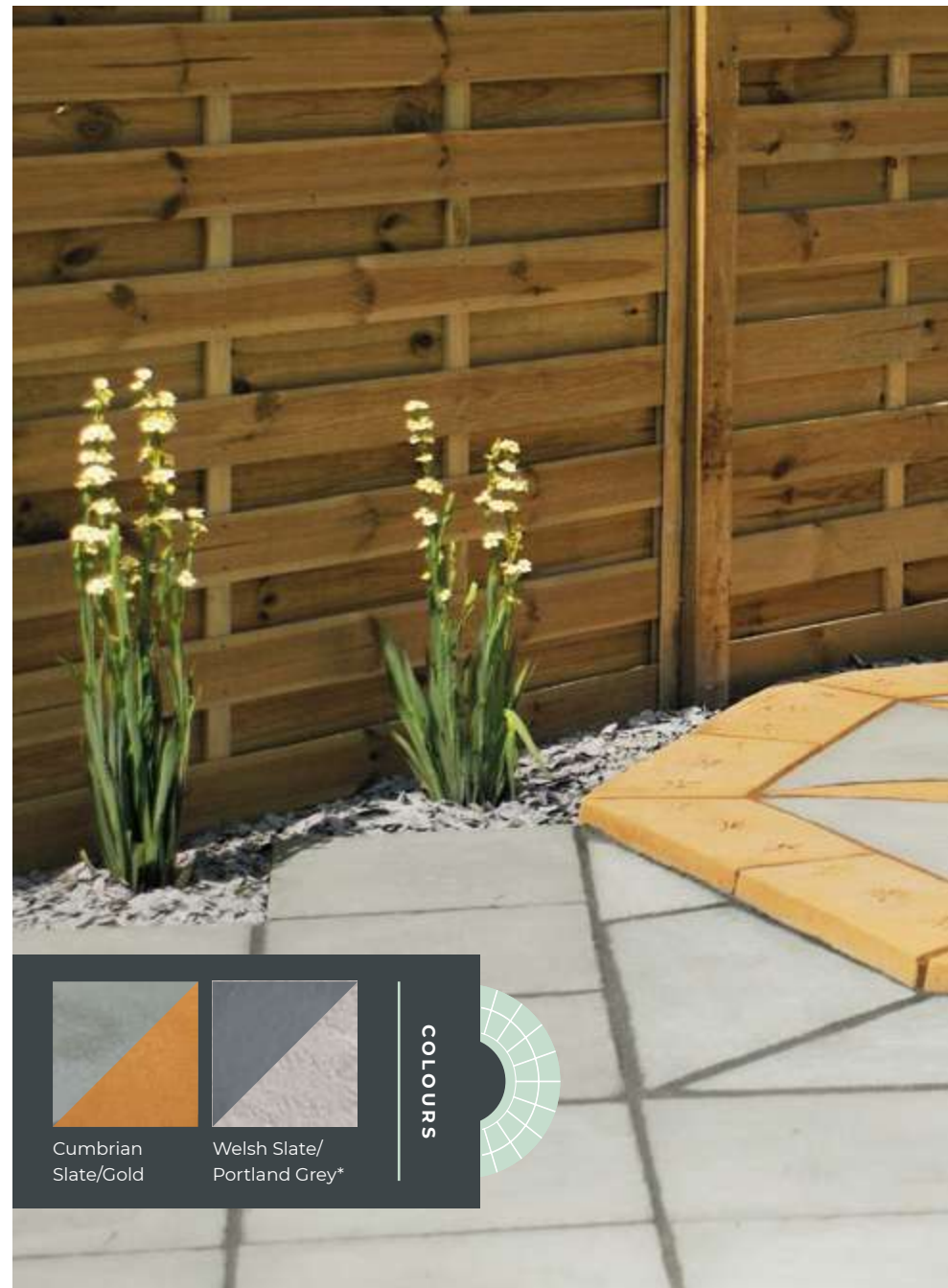


Lakeland Sun 5.76m<sup>2</sup>



## Lakeland Star

Reach for the stars with our striking Lakeland Star Patio Pack. Why not order our North Star to feature N, S, E & W compass points on the points of the star.



Cumbrian  
Slate/Gold



Welsh Slate/  
Portland Grey\*

COLOURS





Lakeland Sun

## Specifications

### PATIO PACKS

Lakeland Sun 5.76m<sup>2</sup>

Approx. Size:  
2400 x 2400mm

Pallet weight:  
471 kg

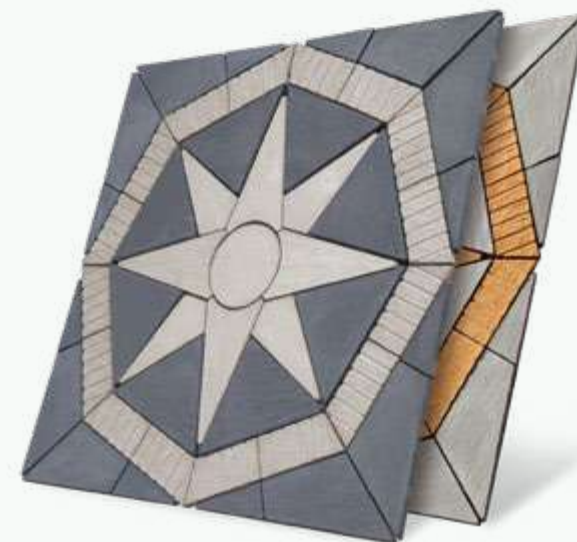
Thickness: 35mm

Lakeland Star 5.76m<sup>2</sup>

Approx. Size:  
2400 x 2400mm

Pallet weight:  
453 kg

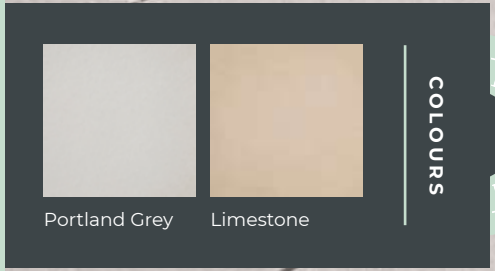
Thickness: 35mm





# Prestbury

26



Portland Grey    Limestone

COLOURS

Prestbury Paving, Portland Grey

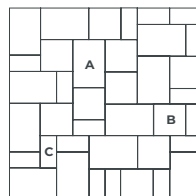


# Prestbury

A high quality paving with a gentle texture and a smart, sophisticated appearance – you won't believe it's not porcelain!

With its fine, clean lines and smart design it's the perfect choice for the modern garden, creating a contemporary style you'll enjoy for years. Available in two natural-looking shades, the Prestbury stone paving pack is created using 3 different sizes.

## PLANS



Prestbury Paving 5.76m<sup>2</sup>

## PAVING PACK

Prestbury Paving 5.76m<sup>2</sup>

Approx. Size:  
2400 x 2400mm

Pallet weight:  
462.2 kg

Contents: 12 = 600 x 400 | 10 = 400 x 400 | 16 = 400 x 200

## PAVING STONES

Size	Unit / m <sup>2</sup>	Unit weight	m <sup>2</sup> / pallet	Unit / pallet	Pallet weight
600 x 400 (A) †	4.2	18.2	6	25	455
400 x 400 (B) †	6.3	12.6	8	50	630
400 x 200 (C) †	12.5	6.2	4	50	310

† Made to order (MTO)

Thickness: 32mm



## Prestbury Chevron

The geometric style of our Prestbury Chevron gives any garden a modern feel.

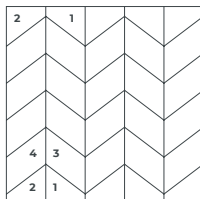
# Prestbury

WAVE &  
CHEVRON

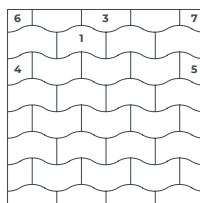
Create a unique garden space with our stylish Prestbury range.

Our Prestbury collection is available in two colours: Calming Portland Grey and stylish Welsh Slate. Whether you choose the straight geometric lines of the Chevron or the soothing lines of the Wave, both will give your garden a dynamic and inspirational look.

## PLANS



Prestbury Chevron 5.54m<sup>2</sup>



Prestbury Wave 5.76m<sup>2</sup>

Prestbury Chevron, Welsh Slate



Prestbury Wave and Ice White Pebbles



## Complement

Perfect paired with pebbles for a beach style feel.





Prestbury Wave, Mixed

**COLOURS**

		
Portland Grey	Welsh Slate	Mixed

## Specifications

### PATIO PACKS

#### Prestbury Chevron 5.54m<sup>2</sup>

Approx. Size:  
2250 x 2460mm

Pallet weight:  
441 kg

Thickness: 35mm

#### Prestbury Wave 5.76m<sup>2</sup>

Approx. Size:  
2400 x 2400mm

Pallet weight:  
462 kg

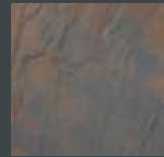
Thickness: 35mm

# Rectory

30



Welsh Slate



Autumn Brown

COLOURS



Rectory Paving Welsh Slate



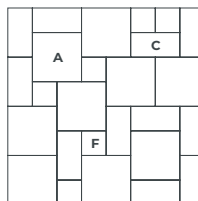
# Rectory

With its deep, heavy riven surface, Rectory Paving is full of character, ideal for creating idyllic spaces with a rural impression.

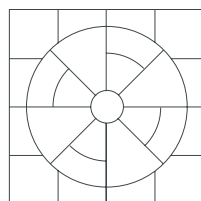
The traditional appearance of Rectory gives refinement to paved areas. Available in a convenient 5.76m<sup>2</sup> paving pack or individual sizes made to order.



## PLANS



Rectory Paving 5.76m<sup>2</sup>



Rectory Circle 3.24m<sup>2</sup>

## Complement

Contrast the traditional appearance of Rectory Paving with a modern driveway rumbled block, creating a statement entrance.

## PAVING PACK

Rectory Paving 5.76m<sup>2</sup>

Approx. Size:  
2400 x 2400mm

Pallet weight:  
408 kg

Contents: **9** = 600 x 600 | **11** = 600 x 300 | **6** = 300 x 300

## PATIO PACK

Rectory Circle 3.24m<sup>2</sup>

Approx. Size:  
1800 x 1800mm

Pallet weight:  
246.7 kg

Contents: **25** specific shapes

## PAVING STONES

Size	Unit / m <sup>2</sup>	Unit weight	m <sup>2</sup> / pallet	Unit / pallet	Pallet weight
600 x 600 <b>(A)</b>	2.8	25	10.71	30	750
600 x 450 <b>(B)</b> †	3.7	19.4	13.51	50	970
600 x 300 <b>(C)</b>	5.5	12	10.91	60	720
450 x 450 <b>(D)</b> †	5	14	10.00	50	700
450 x 300 <b>(E)</b> †	7.4	9.5	6.76	50	475
300 x 300 <b>(F)</b>	11	6	5.45	60	360

† Made to order (MTO)

Thickness: 32mm

# Sleeper

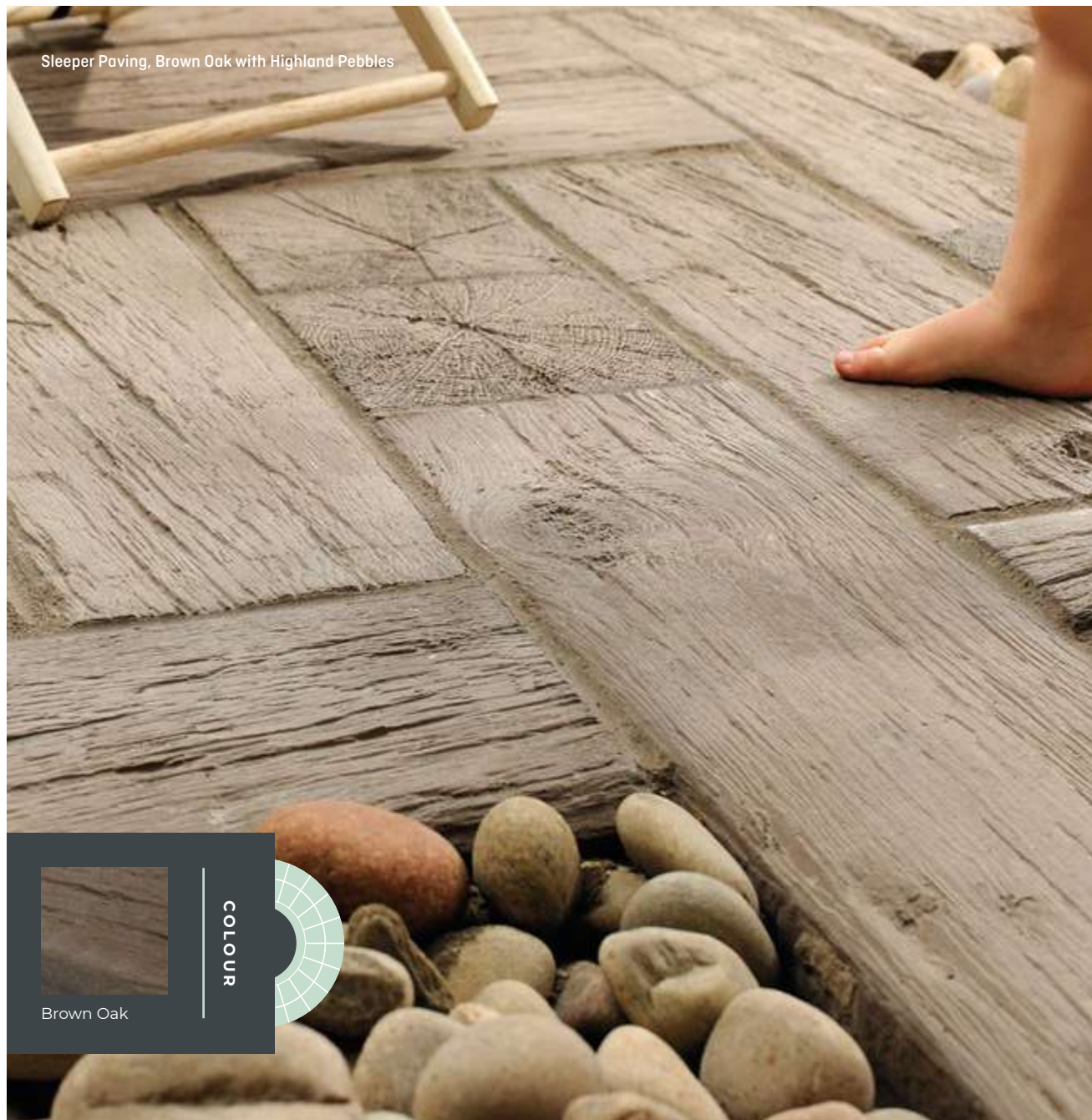
Sleeper Paving captures the warm textures of real timber, without the maintenance.

Beautiful and durable, Sleeper Paving will bring a welcoming rustic feel to your garden. Available in three sizes.

## Specifications

PAVING STONES	Unit / m <sup>2</sup>	Unit weight	m <sup>2</sup> / pallet	Unit / pallet	Pallet weight
Size					
900 x 225	4.9	20.5	4.1	20	410
675 x 225	6.6	15.5	3	20	310
225 x 225	20	5	2	40	200

Thickness: 45mm



Brown Oak

COLOUR



Somerset Paving Buff with Rumbled Blocks in Brindle



**COLOURS**

Grey      Buff      Blue Black

# Somerset

Somerset has a contemporary textured surface suitable for many gardens.

As well as being both practical and hard wearing, the cool colours of Somerset Paving will create a sleek effect in your garden.

## Specifications

PAVING STONES	Unit / m <sup>2</sup>	Unit weight	m <sup>2</sup> / pallet	Unit / pallet	Pallet weight
Size					
450 x 450	5	17.5	8	40	700

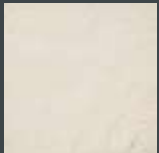
Thickness: 32mm

# Stratford

34



Antique Grey



Parisian

COLOURS

Stratford Paving, Antique Grey

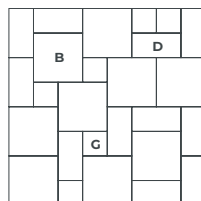


# Stratford

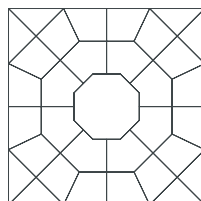
Stratford paving authentically captures the elegance of time-honoured stone, making it feel right at home from the moment it's laid.

With stones beautifully reproduced in Antique Grey and Parisian in a large array of sizes, Stratford paving is a cost-effective and flexible solution.

## PLANS



Stratford Paving 5.76m<sup>2</sup>



Stratford Octagon 5.06m<sup>2</sup>



Stratford Paving and Octagon, Parisian

## Complement

Make a fantastic focal point using the Stratford Octagon feature. Potted plants will add colour and really make your paving stand out.

## PAVING PACK

Stratford Paving 5.76m<sup>2</sup>

Approx. Size:  
2400 x 2400mm

Pallet weight:  
536 kg

Contents: 9 = 600 x 600 | 11 = 600 x 300 | 6 = 300 x 300

## PATIO PACKS

Stratford Octagon 5.06m<sup>2</sup>

Approx. Size:  
2250 x 2250mm

Pallet weight:  
438 kg

Contents: 33 specific shapes

## PAVING STONES

Size	Unit / m <sup>2</sup>	Unit weight	m <sup>2</sup> / pallet	Unit / pallet	Pallet weight
900 x 600 (A) <sup>++</sup>	1.8	59	11.1	20	1180
600 x 600 (B)	2.8	34	7.2	20	680
600 x 450 (C)	3.7	23.5	10.8	40	940
600 x 300 (D)	5.5	16	7.3	40	640
450 x 450 (E)	5	19	8.0	40	760
450 x 300 (F) <sup>+</sup>	7.4	14.8	5.4	40	592
300 x 300 (G)	11	8	3.6	40	320

Thickness: 45mm (\*50mm)

<sup>+</sup>Not available in Parisian

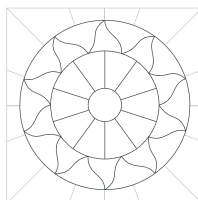
See Aurora & Sun Circle On pages 36-37

# Aurora & Sun Circle

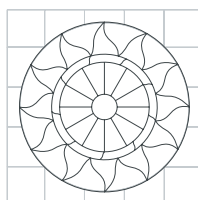
Our Aurora and Sun Circles are both created in a mix of two striking colours; Antique Grey and Barley which creates a dazzling effect in the sunlight that come rain or shine will brighten up any garden!

For additional sunshine in your step head over to page 63 to find out about our Celestial stepping stones.

## PLANS



Aurora Circle 1.8m



Sun Circle 2.56m

Corner infill sets sold separately

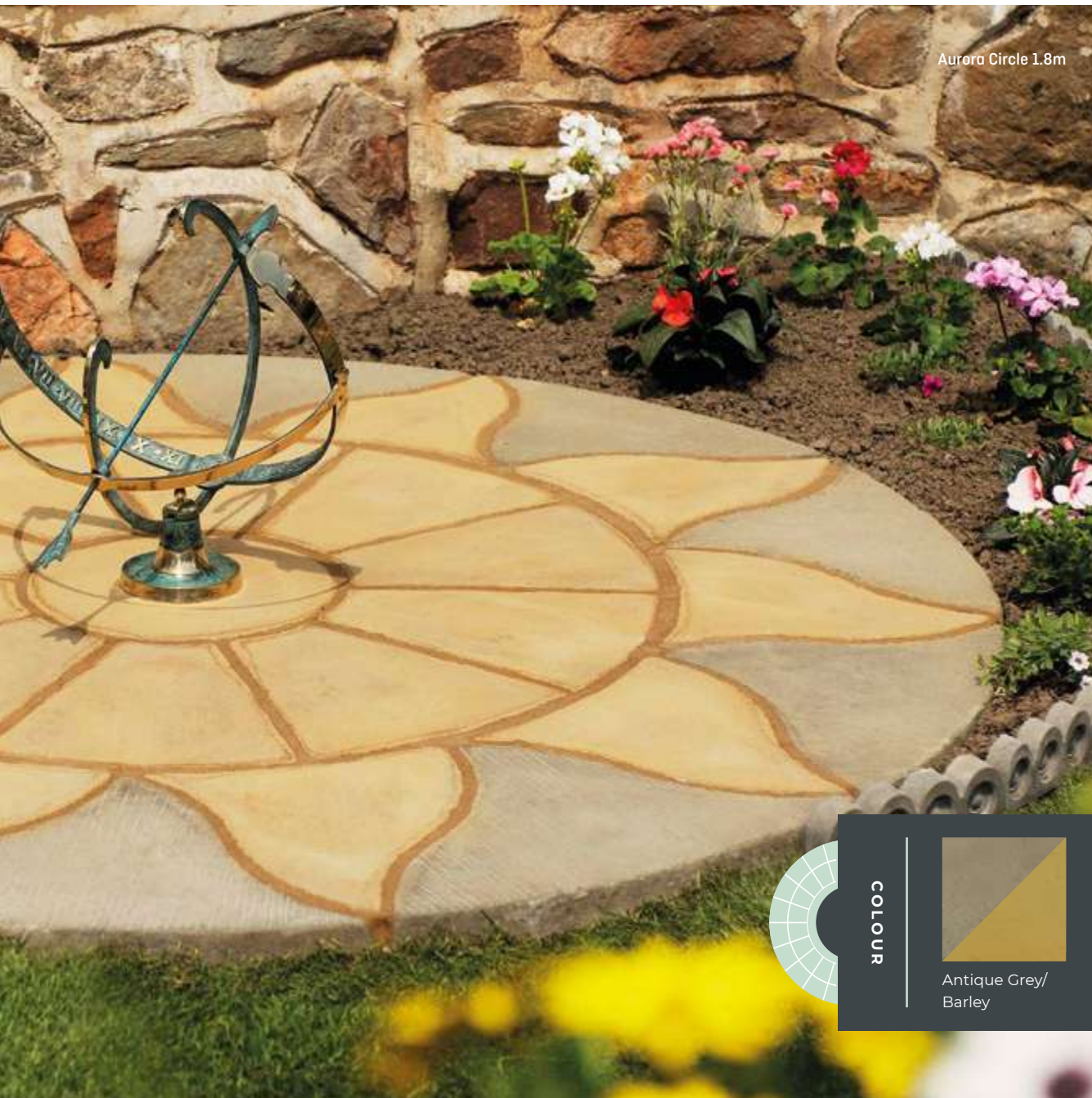


## Sun Circle

Dazzles as a stand-alone feature or can easily be integrated into Stratford Paving using the corner infill set.







Aurora Circle 1.8m



COLOUR



Antique Grey/  
Barley

## Specifications

### PATIO PACKS

#### Aurora Circle 1.8m

Approx. Size:  
1800mm (dia)

Pallet weight: 239 kg

Contents: 31 specific shapes

Approx. Size with infills:  
2100mm x 2100mm

Infill pallet weight: 199 kg

Contents: 20 specific shapes

#### Sun Circle 2.56m

Approx. Size:  
2560mm (dia)

Pallet weight: 435 kg

Contents: 46 specific shapes

Approx. Size with infills:  
3000mm x 3000mm

Infill pallet weight: 361 kg

Contents: 16 specific shapes

# Victorian Setts

Victorian Setts are a simple solution to bringing that period look to your garden with an elegant style.

Re-created from original traditional setts, our Diamond and Chevron Setts recapture the feel of a bygone era. Ideal for pathways, Victorian Setts are a timeless classic.



Diamond Set

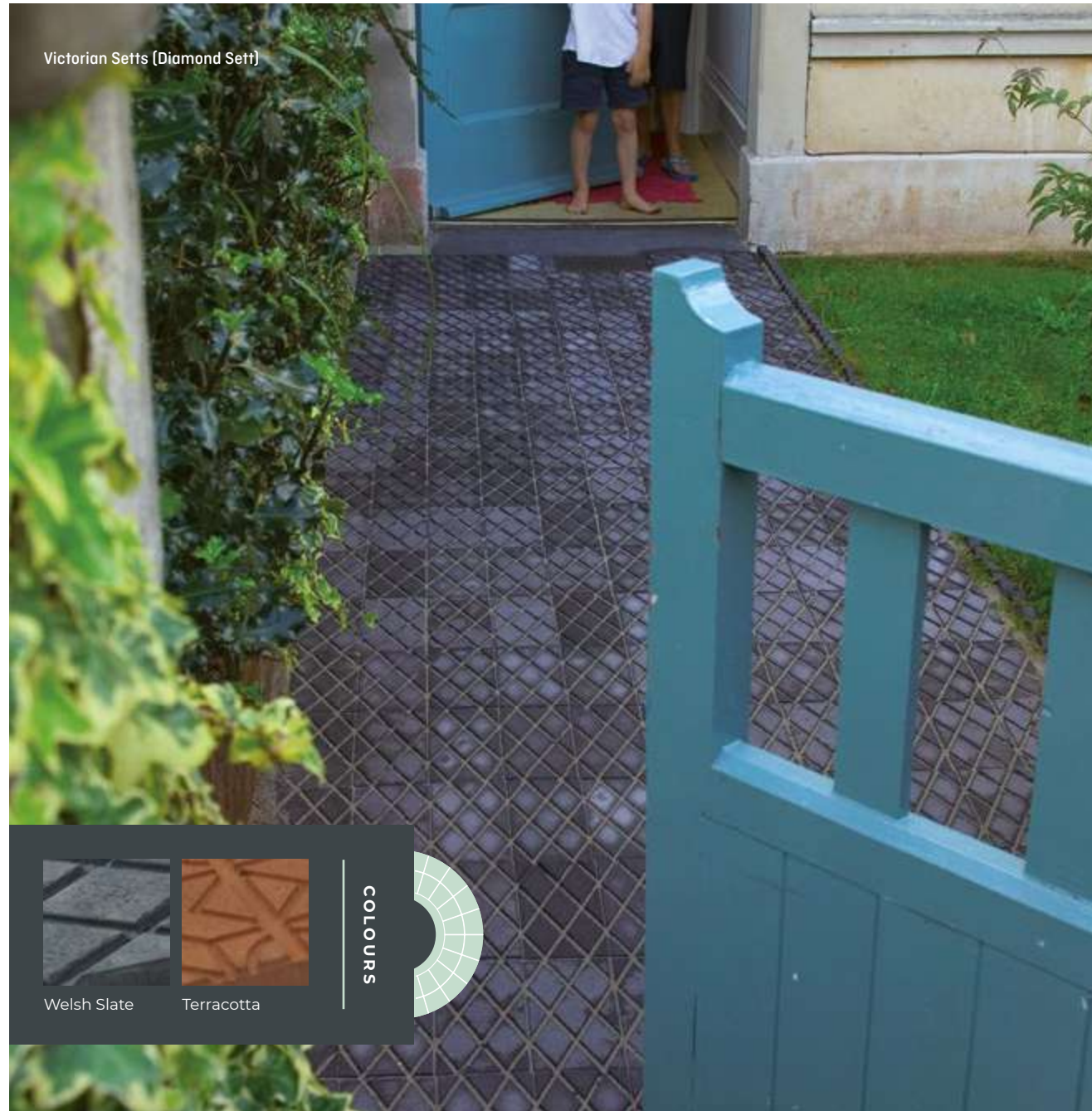


Chevron Set

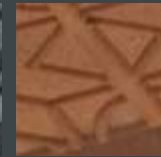
## Specifications

PAVING STONES	Unit / m <sup>2</sup>	Unit weight	m <sup>2</sup> / pallet	Unit / pallet	Pallet weight
Size					
224 x 112	40	2	1.9	75	150

Thickness: 40mm



Welsh Slate



Terracotta

COLOURS





Windsor Paving, Portland Grey

# Windsor

Windsor paving is straight-edged with a lightly textured surface, true to the distinctive nature of classic Yorkshire stone.

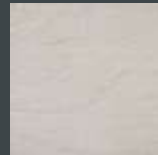
Windsor has been a popular choice for creating delightful garden features for many years. Available in a variety of sizes, a truly random design can be achieved.

## Specifications

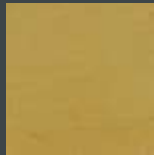
PAVING STONES	Unit / m <sup>2</sup>	Unit weight	m <sup>2</sup> / pallet	Unit / pallet	Pallet weight
Size					
600 x 600	2.8	30	8.9	25	750
600 x 450	3.7	22	13.5	50	1100
600 x 300	5.5	14.5	9.1	50	725
450 x 450	5	17	10	50	850
450 x 225	10	8	5	50	400
300 x 300	11	7	4.5	50	350

Thickness: 38mm

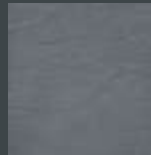
### COLOURS



Portland Grey



Barley



Welsh Slate



Rumbled Block Autumn

## First Impressions

Create a wonderful first impression for your property with our desirable and durable collection of block paving.

- 41** | Driveway
- 42** | Rumbled
- 43** | Stonemaster

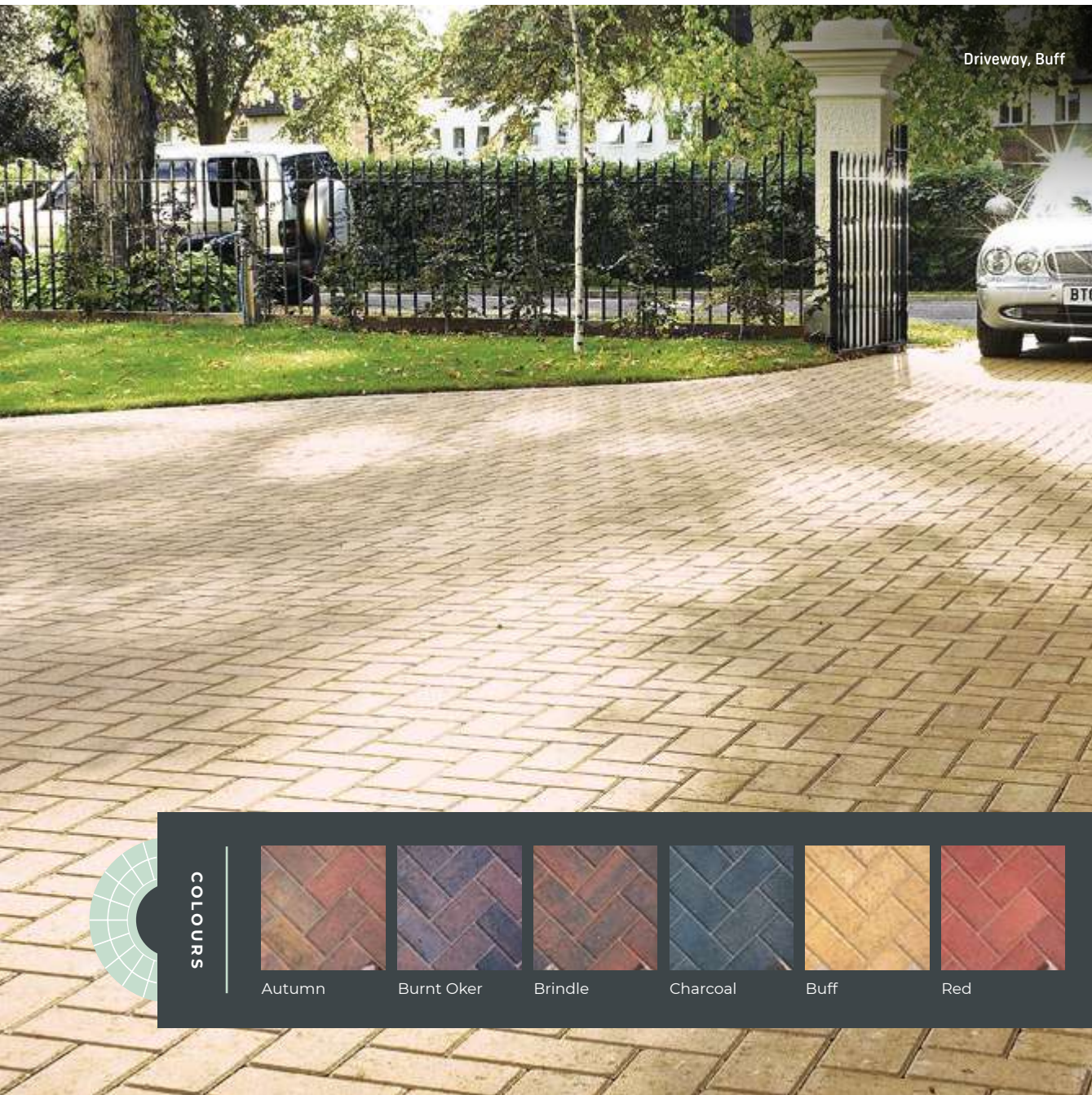
40

# Block paving

### IMPORTANT INFORMATION

All images shown in this brochure are for illustrative purposes only. Every effort is made to ensure accurate colour representation, however due to photographic and printing processes and varying light conditions, colours may not exactly match current production. We strongly recommend that colours are judged and chosen from actual materials and samples are sought from your local retailer.





Driveway, Buff

# Driveway

A highly durable block paving not only suitable for driveways but a versatile solution for patios.

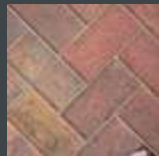
With 6 colour options, Driveway offers a wealth of mix and match possibilities.

## Specifications

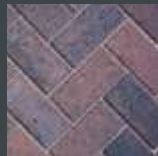
PAVING STONES	Unit / m <sup>2</sup>	Unit weight	m <sup>2</sup> / pallet	Unit / pallet	Pallet weight
Size					
200 x 100	50	2.27	9.76	488	1110

Thickness: 50mm

### COLOURS



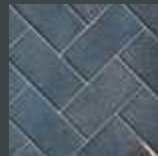
Autumn



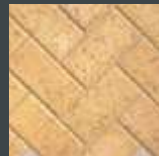
Burnt Oker



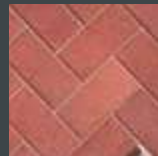
Brindle



Charcoal



Buff



Red



# Rumbled

Thanks to the rumbled finish, this charming cobble type paving has a softer surface with smooth rounded edges, enhancing its weathered appearance.

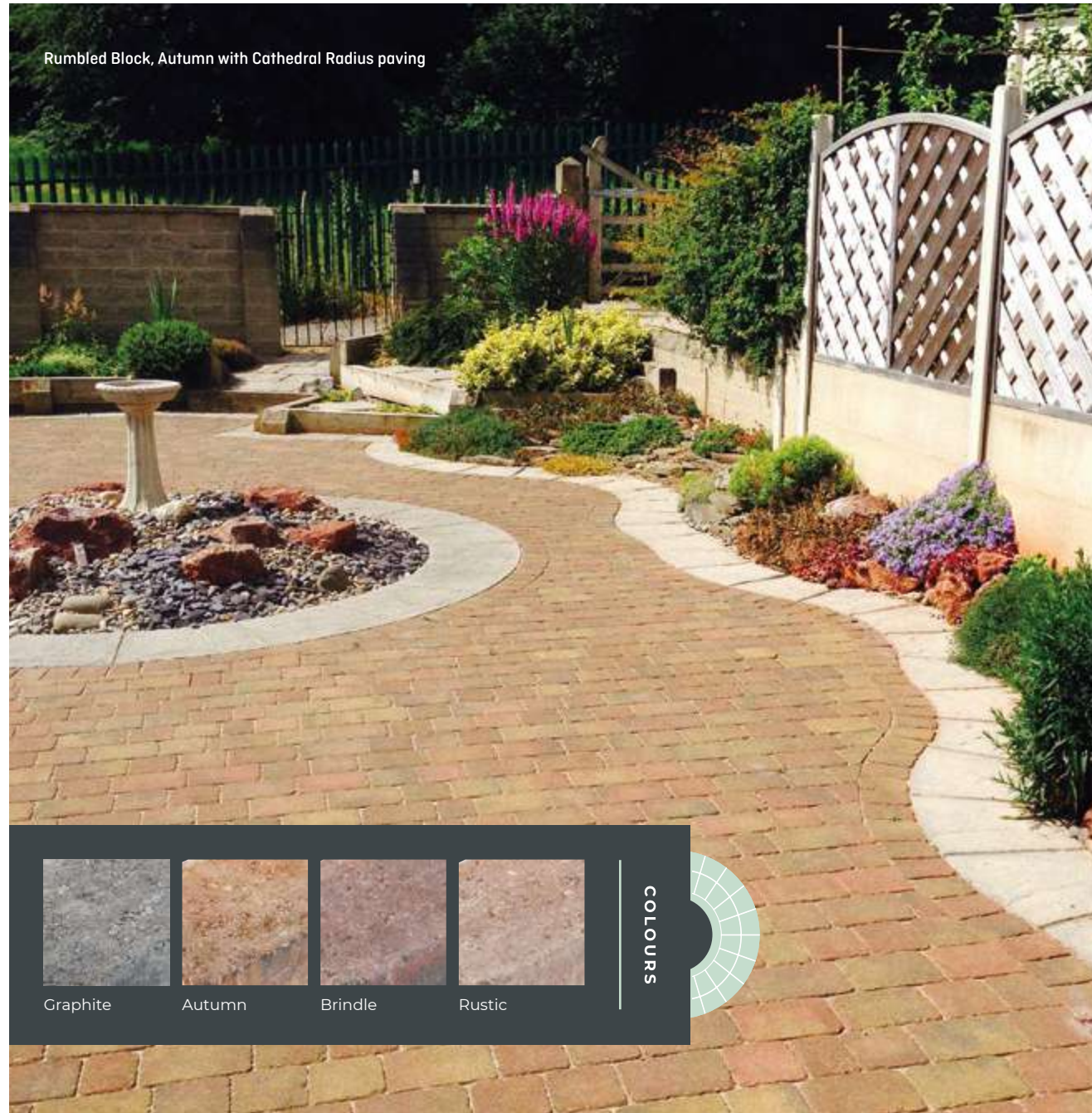
3 sizes in the range allows for numerous laying options.

## Specifications

PAVING STONES					
Size	Unit / m <sup>2</sup>	Unit weight	m <sup>2</sup> / pallet	Unit / pallet	Pallet weight
200 x 134	37	2.98	9.08	336	1002
134 x 134	56	1.99	9.0	504	1002
100 x 134	75	1.49	8.96	672	1002

Thickness: 50mm

Rumbled Block, Autumn with Cathedral Radius paving



Graphite



Autumn



Brindle



Rustic

COLOURS



Stonemaster Block Paving in mix of 3 shades



# Stonemaster

Pre-treated with a Surface Protection this block paving guards against everyday contaminants such as oil, grease, moss & drinks and eases cleaning when used on drives and patios.

It can be laid in a single shade or mixed to fully replicate natural stone.

## Specifications

PAVING STONES	Unit / m <sup>2</sup>	Unit weight	m <sup>2</sup> / pallet	Unit / pallet	Pallet weight
Size					
300 x 100	33.3	4	7.20	240	960

Mixed size packs also available.

Thickness: 60mm

Natural Sandstone Fossil Buff

44

# Natural Stone

PAVING

## Rich and harmonious tones

Whether you're planning a contemporary look or a classic English style, our exquisite natural stone will bring rich tones and provide depth to your garden.

- 45 | Limestone
- 46 | Sandstone
- 47 | Smooth Natural Sandstone

### IMPORTANT INFORMATION

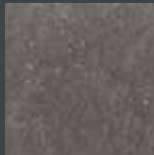
All images shown in this brochure are for illustrative purposes only. Every effort is made to ensure accurate colour representation, however due to photographic and printing processes and varying light conditions, colours may not exactly match current production. We strongly recommend that colours are judged and chosen from actual materials and samples are sought from your local retailer.



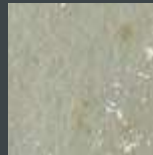
Natural Limestone Blue Black



COLOURS



Blue Black\*



Azure

# Limestone

With its consistent colour palette, gentle riven surface and hand cut edges, limestone is the perfect choice to give your outdoor area a durable yet sophisticated finish.

Suitable for both contemporary and traditional garden designs.

## Specifications

### PAVING PACK

Limestone 15.3m<sup>2</sup>

Thickness: 22mm

Approx. Size:  
3400 x 4500mm

Pallet weight:  
800 kg

Contents: 13 = 900 x 600 | 13 = 600 x 600 | 13 = 600 x 300 | 9 = 300 x 300

\*Some sizes of Blue Black available in single sizes

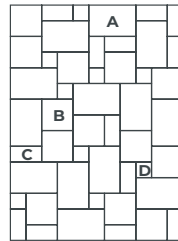
[www.bowlandstone.com](http://www.bowlandstone.com)

NATURAL STONE PAVING

# Sandstone

With an attractive finish and subtle tonal variations, making each piece unique, Sandstone is a popular choice for a wide variety of gardens.

## PLANS



## Specifications

### PAVING PACK

Sandstone Natural Stone 15.3m<sup>2</sup>

Approx. Size:  
3400 x 4500mm

Pallet weight:  
825 kg

Contents: 13 = 900 x 600 | 13 = 600 x 600 | 13 = 600 x 300 | 9 = 300 x 300

PAVING STONES	Unit / m <sup>2</sup>	Unit weight	m <sup>2</sup> / pallet	Unit / pallet	Pallet weight
Size					
900 x 600 (A)	1.8	30	15.6	28	840
600 x 600 (B)	2.8	20	14.3	40	800
600 x 300 (C)	5.5	10	15.5	85	850
300 x 300 (D)	11	5	7.7	85	425

Thickness: 22mm - Approximately calibrated to 22mm

[www.bowlandstone.com](http://www.bowlandstone.com)

Natural Sandstone, Sunset Buff



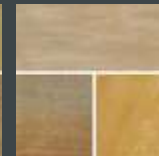
Fossil Buff



Silver Grey



Autumn Green



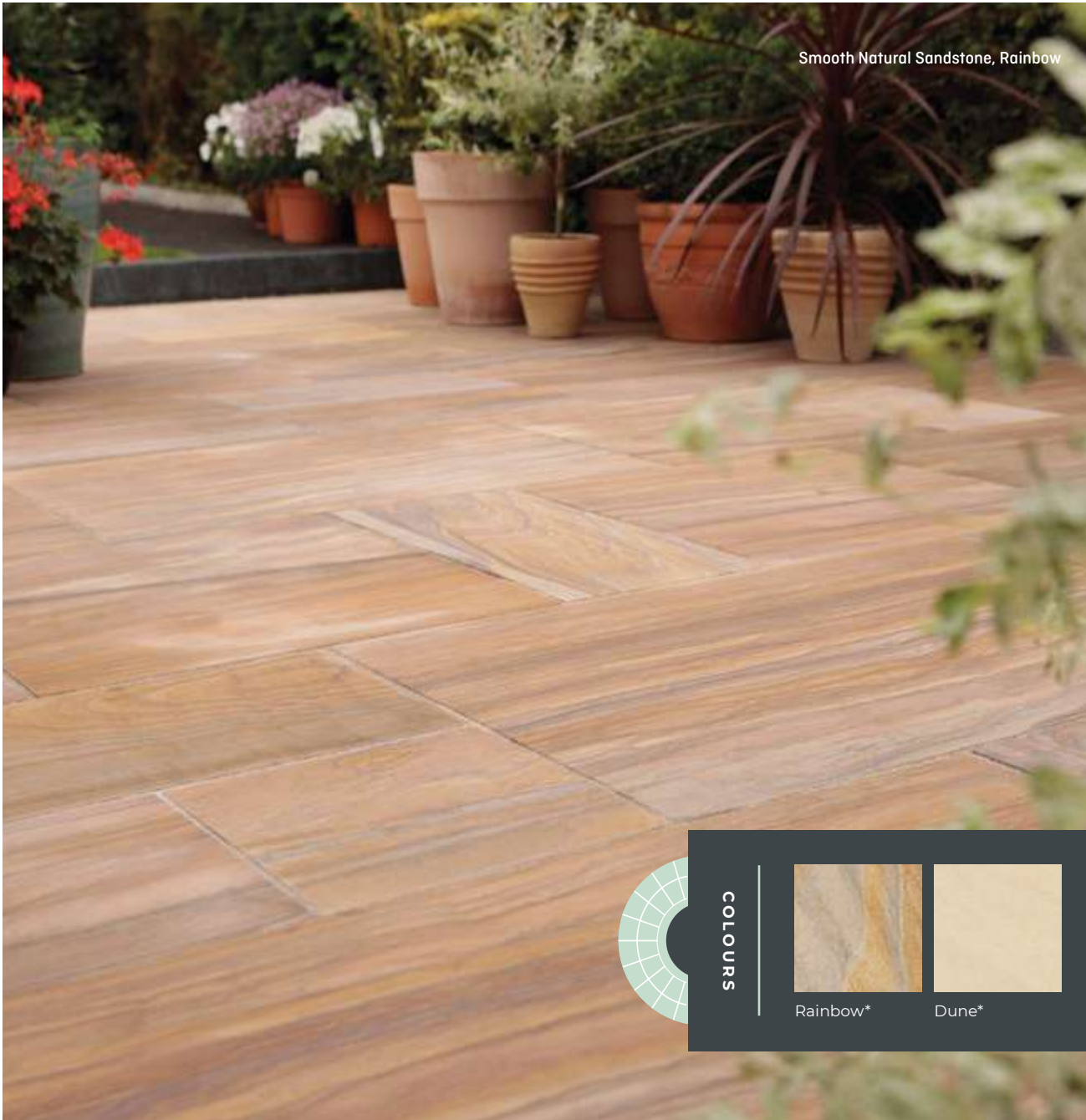
Sunset Buff

COLOURS

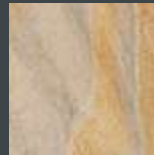
NATURAL STONE PAVING



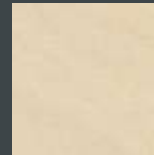
Smooth Natural Sandstone, Rainbow



COLOURS



Rainbow\*



Dune\*

# Smooth

## NATURAL SANDSTONE

A smooth diamond sawn sandstone that provides a tasteful, refined and elegant back drop for any garden.

Still encompassing all the colour & veining variations of natural sandstone, making each patio truly unique.

### Specifications

#### PAVING PACK

Smooth Natural Sandstone 15.3m<sup>2</sup>

**Approx. Size:**  
3400 x 4500mm

**Pallet weight:**  
825 kg

**Contents:** 13 = 900 x 600 | 13 = 600 x 600 | 13 = 600 x 300 | 9 = 300 x 300

**Note:** Smooth Natural Sandstone should be sealed prior to laying

Thickness: 22mm

[www.bowlandstone.com](http://www.bowlandstone.com)

# Porcelain

## PAVING

Mode Profiled, Silver Grey

## The best of both worlds

If you think porcelain is a little too delicate for paving, you're in for a very pleasant surprise. As well as providing a smooth, elegant finish, it also offers an amazingly hard wearing, scratch resistant and low maintenance surface.

- 49** | Arenaria
- 50** | Brooklyn
- 51** | Mode Profiled
- 52** | Tatra
- 53** | Tephra

### IMPORTANT INFORMATION

A slurry primer needs to be applied to the reverse of each paver prior to laying, to aid adhesion.

All images shown in this brochure are for illustrative purposes only. Every effort is made to ensure accurate colour representation, however due to photographic and printing processes and varying light conditions, colours may not exactly match current production. We strongly recommend that colours are judged and chosen from actual materials and samples are sought from your local retailer.





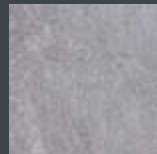
Arenaria Light Grey



COLOURS



Dark Grey



Light Grey



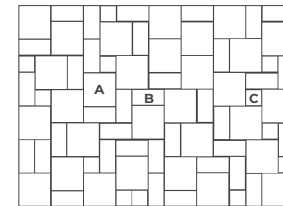
Cream

# Arenaria

Designed to replicate the look of randomly laid natural sandstone with consistently accurate sizes.

The Arenaria patio pack can be laid with thin joints for a traditional feel with a contemporary twist.

## PLANS



*Specifications*

## PAVING PACK

Arenaria Porcelain 18.36m<sup>2</sup>

Approx. Size:  
5100 x 3600mm

Pallet weight:  
880 kg

Contents: 30 = 595 x 595 | 36 = 595 x 295 | 12 = 295 x 295

Thickness: 20mm

# Brooklyn

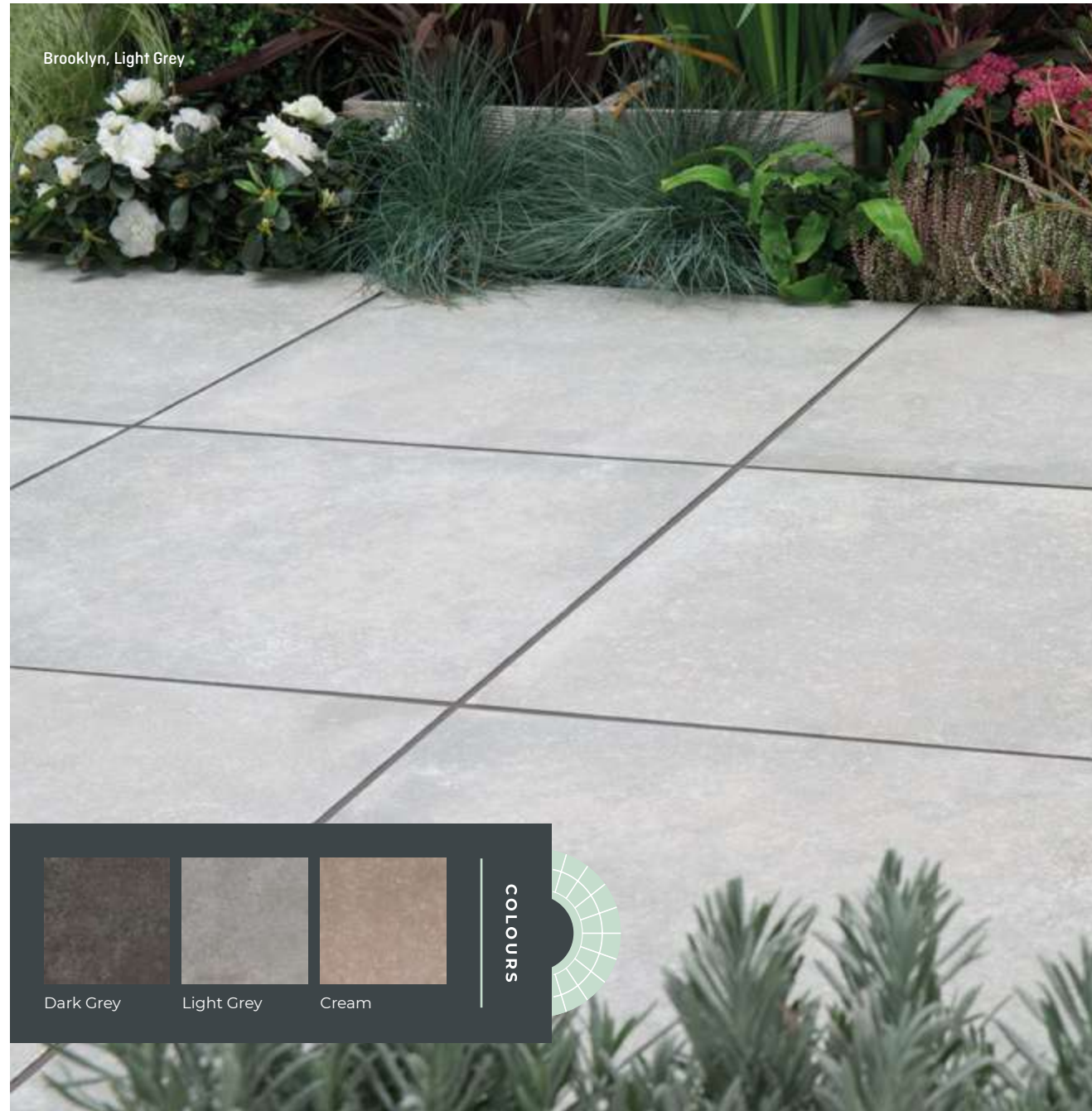
An ultra modern design that comes in one size.

Brooklyn creates an urban look in any outdoor space.

## Specifications

PAVING STONES	Unit / m <sup>2</sup>	Unit weight	m <sup>2</sup> / pallet	Unit / pallet	Pallet weight
Size					
600 x 600	2.78	17.5	21.60	60	1050

Thickness: 20mm

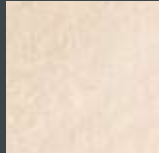




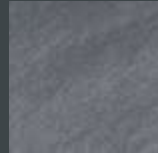


Mode Profiled Silver Grey

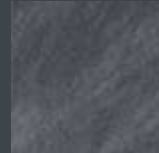
COLOURS



Beige



Dark Grey



Graphite



Silver Grey

# Mode Profiled

Looking to create the ultimate contemporary outdoor space?

Mode Profiled has a fine riven texture featuring mica crystals to add interest and sparkle to your patio.

Available in two sizes and four gorgeous shades, this range is designed to make a statement.

## Specifications

PAVING STONES	Unit / m <sup>2</sup>	Unit weight	m <sup>2</sup> / pallet	Unit / pallet	Pallet weight
Size					
600x600	2.8	17.5	21.6	60	1050
600x300*	5.56	8.5	12.96	72	612

\*Only available in Beige & Graphite

Thickness: 20mm

# Tatra

Designed to offer an excellent value alternative to other porcelain ranges, this 18mm porcelain paver has a precision edge giving a clean, symmetrical finish.

Available in one size and three colour options, Tatra will add a modern sophistication to any garden.

## Specifications

PAVING STONES	Unit / m <sup>2</sup>	Unit weight	m <sup>2</sup> / pallet	Unit / pallet	Pallet weight
Size					
600x600	2.8	16.4	23.04	64	1050

Thickness: 18mm







Tephra Cream

# Tephra


Contemporary style you'll enjoy for years.

This range imitates the look of contemporary sawn sandstone and is available in one size of paver for a uniform pattern.

## Specifications

PAVING STONES	Unit / m <sup>2</sup>	Unit weight	m <sup>2</sup> / pallet	Unit / pallet	Pallet weight
Size					
600 x 600	2.78	17.5	21.60	60	1050

Thickness: 20mm



Plum Slate 40mm

## Closer to nature

From ponds and rockeries to driveways and paths, decorative stones are a versatile way to create interesting features and bring both colour and texture into your garden.

- 55** | Decorative Aggregates
- 58** | Rockery Range
- 59** | Essentials Range
- 61** | Horticultural Range

### IMPORTANT INFORMATION

All images shown in this brochure are for illustrative purposes only. Every effort is made to ensure accurate colour representation, however due to photographic and printing processes and varying light conditions, colours may not exactly match current production. We strongly recommend that colours are judged and chosen from actual materials and samples are sought from your local retailer.



# DECORATIVE Aggregates

## PEBBLES, CHIPPINGS & SLATES

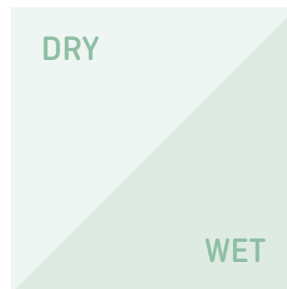
### Measure up

Use the table below to work out how many Large Packs you will need.

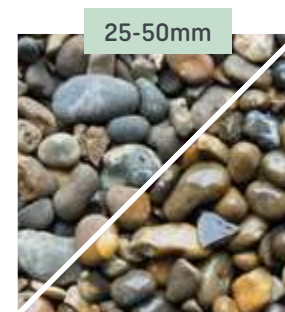
m <sup>2</sup>	1	2	3	4	5
1	4	8	12	16	20
2	8	16	24	32	40
3	12	24	36	48	60
4	16	32	48	64	80
5	20	40	60	80	100

Based on a 50mm (2") average coverage.  
e.g. to cover an area of 3m x 2m at a depth of 50mm, you will require approx. 24 bags  
If you have a larger area to cover, our bulk bags cover between 10-11m<sup>2</sup>.

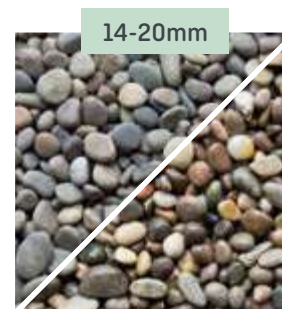
### PEBBLES



Henham Blend\*



Henham Blend\*



Highland\*



Highland\*



Highland\*



Highland\*



Ice White\*



Ice White\*

CHIPPINGS



Brown Pea Gravel\*



Chard Flint\*



Cornish Granite\*



Cotswold Stone



Emerald Green\*



Huntleywood\*



Moonstone



Pea Gravel\*



Raspberry Ripple



Rose Pink



Somerset Grey



South Cerney



Thames Valley Flint\*



White Marble

POLISHED PEBBLES



Polished Pebbles Blended\*\*



Polished Pebbles Ebony\*\*



Polished Pebbles Ivory\*\*





SLATES



20mm

Blue Slate\*



20mm

Green Slate\*



20mm

Plum Slate\*



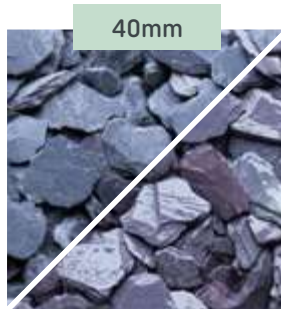
40mm

Blue Slate\*



40mm

Green Slate\*



40mm

Plum Slate\*



*Easy Grid*

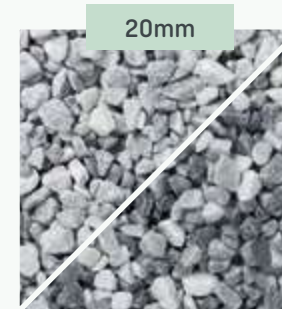
Our durable plastic easy grid will help to keep your aggregates in place. Especially effective for driveways and well trodden gardens.

*Ground Cover*

We would advise using our ground cover under your aggregate as an effective weed suppressant.

PREMIUM CHIPPINGS

Our Premium Chippings range are a versatile way to add texture and colour into your garden, while adding that touch of sophistication & flair.



20mm

Alpine Blue\*



20mm

Black Ice\*



20mm

Blossom\*



20mm

Smoky Black

# Rockery

These stunning stones will spice up your garden allowing you to create striking garden features.

Rockeries can come in all shapes and sizes, from miniature rock gardens in containers to large slopes.



## ROCKERY



Caledonian Cobbles (100-200mm)



Cotswold



Green



Green Slate



Grey Limestone



Plum Slate



Red



Rustic Slate



Yorkstone



# Essentials

At Bowland Stone we have a large variety of extra items to help you to create your perfect garden. From essential sands and aggregates to bark and topsoil. If you cannot see what you are looking for on these next pages please visit our website or give one of our sales team a call, we are always happy to assist.

## SANDS & BALLAST

Various types suitable for a variety of building uses including bedding paving stones and block paving, producing concrete mixes and filling joints.

### SANDS & BALLAST



Sharp Sand



Grit Sand



Yellow Building Sand



Red Building Sand



Kiln Dried Sand



Subbase



Yellow Ballast



Limestone Ballast



0-4mm Dust



### PERMEABLE AGGREGATES

Various grades of 'clean' chippings to allow water drainage for use with block paving, to comply with driveway regulations.

6mm



Bedding

6mm 'clean' chipping used above the 14mm chipping, and below block paving. 6mm Clean Limestone.

14mm



Drainage

14mm 'clean' chipping used as a sub base. 14mm Clean Limestone.

3mm



Jointing

3mm 'clean' aggregate for filling the joints between block paving. Horticultural Grit.



Pea Gravel

A free-draining aggregate for use in drainage and pipe bedding.



Play Sand

Bring the fun of the beach to your garden.



Road Salt

Purpose produced to clear paths and driveways in icy conditions.

*Also available*



AND MORE



# Horticultural

**Get Planting** - Give life to your soft landscaping projects using the perfect horticultural product. Perfect for Pot Topping, Soil Aeration, Planting & Blending, Moisture Retention.



HORTICULTURAL

## HORTICULTURAL



Bark/Mulch



Compost



Horticultural Grit\*



Horticultural Potting Grit



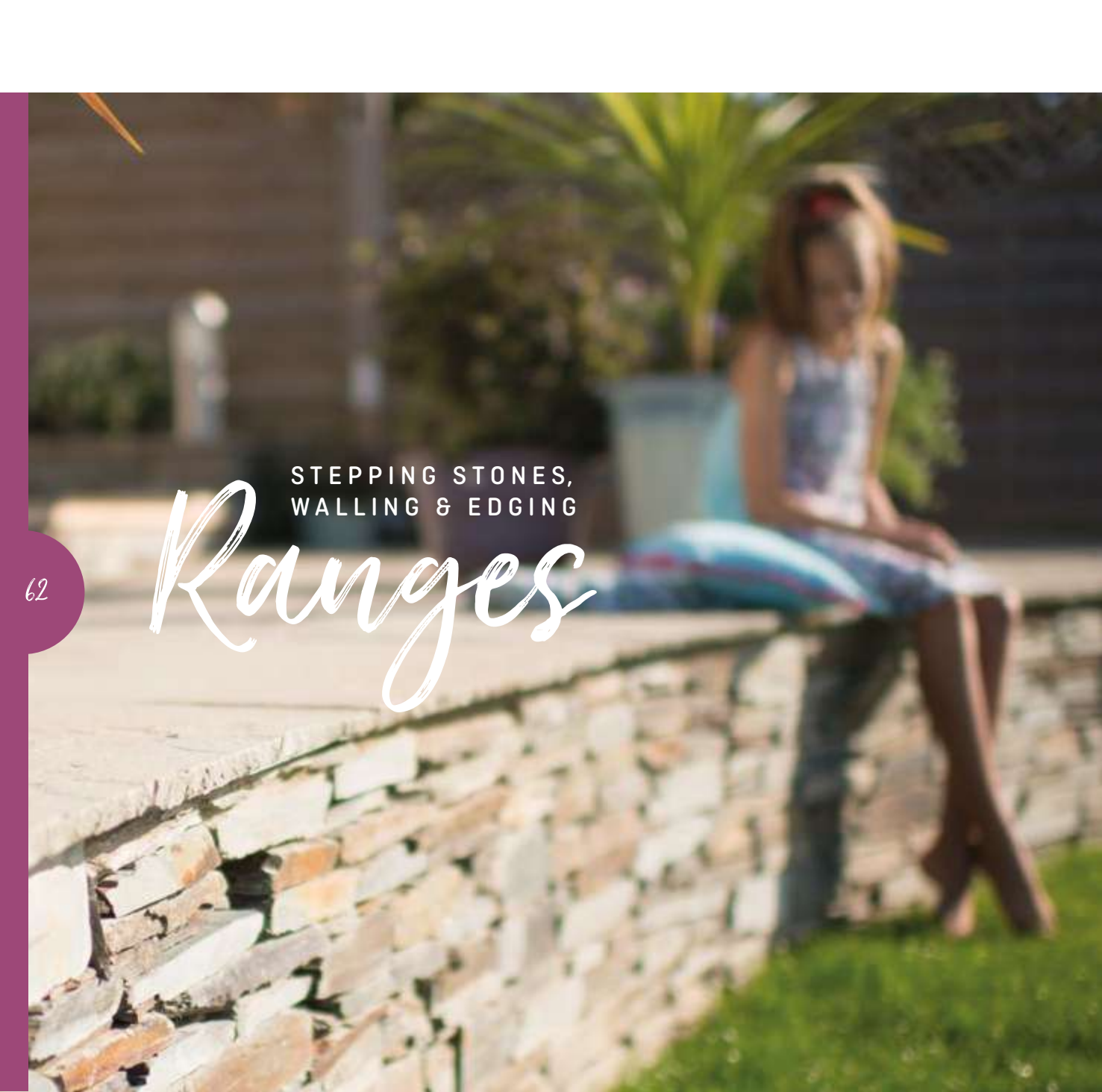
Horticultural Sand



Soil Conditioner



Topsoil

A woman with long hair, wearing a light-colored sleeveless top and dark pants, is sitting on a low stone wall. She is holding a blue and white striped cushion. The background is a lush garden with green plants and a blurred building. The overall scene is bright and sunny.

STEPPING STONES,  
WALLING & EDGING

# Ranges

62

## Everything you need in one place

All those little extras for your garden that just finish it off and complete your green escape. Complement your patios, walls & lawns with one of our finishing touches.

- 63** | Stepping Stones
- 66** | Lakeland Walling
- 67** | Meadow Walling
- 68** | Priory Cottage Walling
- 69** | Priory Split Walling
- 70** | Copings
- 72** | Edging

### IMPORTANT INFORMATION

All images shown in this brochure are for illustrative purposes only. Every effort is made to ensure accurate colour representation, however due to photographic and printing processes and varying light conditions, colours may not exactly match current production. We strongly recommend that colours are judged and chosen from actual materials and samples are sought from your local retailer.



# Stepping Stones

Making use of Stepping Stones in your garden is a great way to complement patios or create a fun, winding pathway or walkway. Our ranges are diverse enough to match any scheme and connect all elements of your garden.



## Cathedral RANGE



**Cathedral**

Colour: Weathered Moss  
300mm & 400mm (dia)



**Cathedral**

Colour: Barley  
300mm & 400mm (dia)



**Cathedral**

Colour: Weathered York  
300mm & 400mm (dia)

## Catherine Wheel RANGE



**Catherine Wheel**

Colour: Barley  
450mm (dia)



**Catherine Wheel**

Colour: Weathered Slate  
450mm (dia)

## Celestial RANGE



**Celestial Sun**

Colour: Antique Grey/Barley  
450mm (dia)



**Celestial Moon**

Colour: Welsh Slate  
450mm (dia)



**Celestial Star**

Colour: Mellow Gold  
450mm (dia)

Products	Size	Unit weight	Unit / pallet	Pallet weight
Cathedral	300 (dia)	6.5	25	162.5
Cathedral	400 (dia)	9.8	25	245
Catherine Wheel	450 (dia)	9.8	25	245
Celestial Sun	450 (dia)	10.21	25	255.25
Celestial Moon	450 (dia)	10.21	25	255.25
Celestial Star	450 (dia)	10.21	25	255.25
Chapter Irregular	500 (dia)	14.2	25	355
Compass	440 (dia)	8.6	25	215
Deckstone	450 (dia)	10.75	25	268.75
Driftwood Log	360 (dia)	8.7	20	174
Heart	420 (dia)	8.3	25	207.5
Hexagon Rainbow	400 (dia)	5.2	25	130
Japanese	Various	17	25	425
Oval	450 (dia)	7.2	25	180
Rope	440 (dia)	11.06	25	276.50
Wild Bird Eagle	390 (dia)	10	25	250
Wild Bird Owl	390 (dia)	10	25	250
Wild Bird Woodpecker	390 (dia)	10	25	250
Wild Animal Fish	300 (dia)	5.5	25	137.5
Wild Animal Fox	300 (dia)	5.5	25	137.5
Wild Animal Hedgehog	450 (dia)	5.5	25	137.5
Wild Animal Squirrel	450 (dia)	5.5	25	137.5

## Chapter RANGE



**Chapter Irregular**

Colour: Tundra  
500mm (dia)



**Chapter Irregular**

Colour: Barley  
500mm (dia)

## Compass



**Compass**

Colour: Bath Buff  
440mm (dia)

## Deckstone RANGE



**Deckstone**

Colour: Brown Oak  
450mm (dia)



**Deckstone**

Colour: Barley  
450mm (dia)

## Driftwood Log



**Driftwood Log**

Colour: Brown Oak  
360mm (dia)

## Heart RANGE



**Heart**

Colour: Brown Oak  
420mm (dia)



**Heart**

Colour: Barley  
420mm (dia)

## Hexagon



**Hexagon**

Colour: Rainbow  
400mm (dia)



## Oval



### Oval

Colour: Limestone  
450mm (dia)

## Japanese RANGE



### Japanese

Colour: Antique Grey  
475mm – 550mm (various sizes)



### Japanese

Colour: Barley  
475mm – 550mm (various sizes)

## Rope



### Rope

Colour: Bath Buff  
440mm (dia)

## Wild Bird RANGE



### Wild Bird Eagle

Colour: Bath Buff  
390mm (dia)



### Wild Bird Owl

Colour: Bath Buff  
390mm (dia)



### Wild Bird Woodpecker

Colour: Bath Buff  
390mm (dia)

## Wild Animal RANGE



### Wild Animal Fish

Colour: Bath Buff  
300mm (dia)



### Wild Animal Fox

Colour: Bath Buff  
300mm (dia)



### Wild Animal Hedgehog

Colour: Bath Buff  
300mm (dia)



### Wild Animal Squirrel

Colour: Bath Buff  
300mm (dia)



Heart, Brown Oak and Barley

# Lakeland

Lakeland faithfully captures the art of laying dry slate walling, providing a timeless structure for any garden.



Full Block†



Half Block†



Coping/Edging†

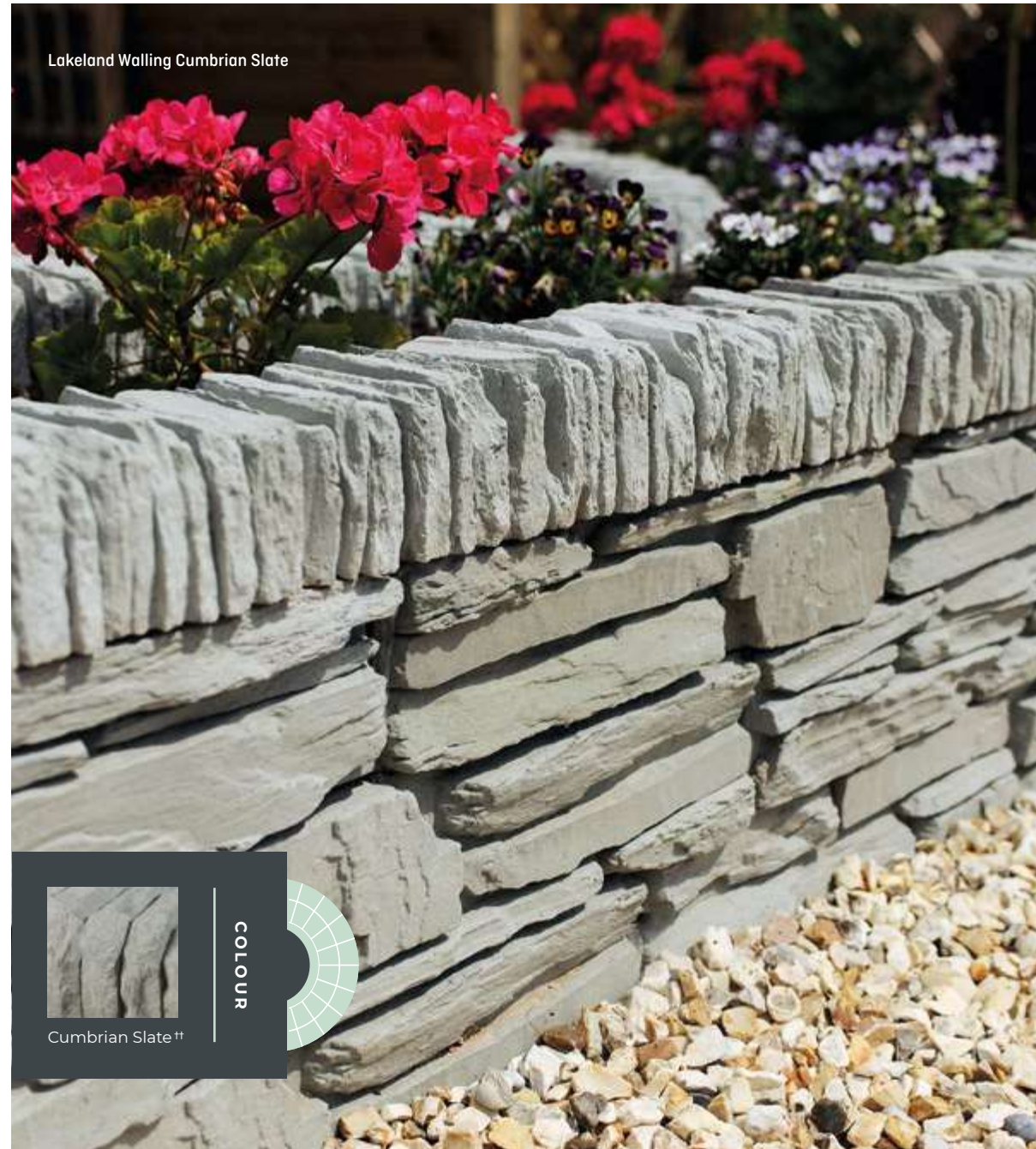


Flat Coping

## Specifications

Product	Size	Unit / m <sup>2</sup>	Unit weight	m <sup>2</sup> / pallet	Unit / pallet	Pallet weight
Full Block*	440 x 120	17	12	3.8	60	720
Half Block*	220 x 120	33	6.5	1.8	60	390
Coping/Edging**	440 x 140	-	15	-	60	900
Flat Coping***	440 x 150	-	5	-	60	300

\*Thickness: 115mm | \*\*Thickness: 100mm | \*\*\*Thickness: 30mm



Lakeland Walling Cumbrian Slate

Cumbrian Slate †

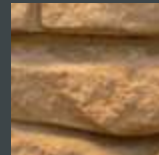
COLOUR



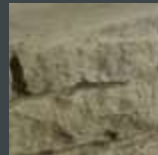


Meadow Walling Parisian

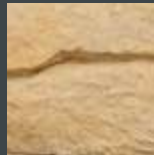
COLOURS



Barley



Tundra



Parisian

# Meadow

Meadow Walling has been crafted using original natural dry stone walling masters, recreating a rustic look that is durable and versatile.



Full Block†



Half Block†



Coping/Edging



Single Coping



Double Coping

Product	Size	Unit / m <sup>2</sup>	Unit weight	m <sup>2</sup> / pallet	Unit / pallet	Pallet weight
Full Block*	440 x 150	14	12.5	4.3	60	750
Half Block*	215 x 150	28	12.5	2.15	60	360
Coping/Edging*	440 x 100	2.2	8	-	60	480
Single Coping**	600 x 160	1.66	9.5	-	50	475
Double Coping**	600 x 280	1.66	16.5	-	50	825

\*Thickness: 100mm | \*\*Thickness: 40mm



# Priory COTTAGE WALLING

Our Priory Cottage range reflects a more rugged and weather-worn style of walling.

Inspired by Cotswold Stone, this look is great for traditional gardens and adds a calming, rustic element to any patio area.

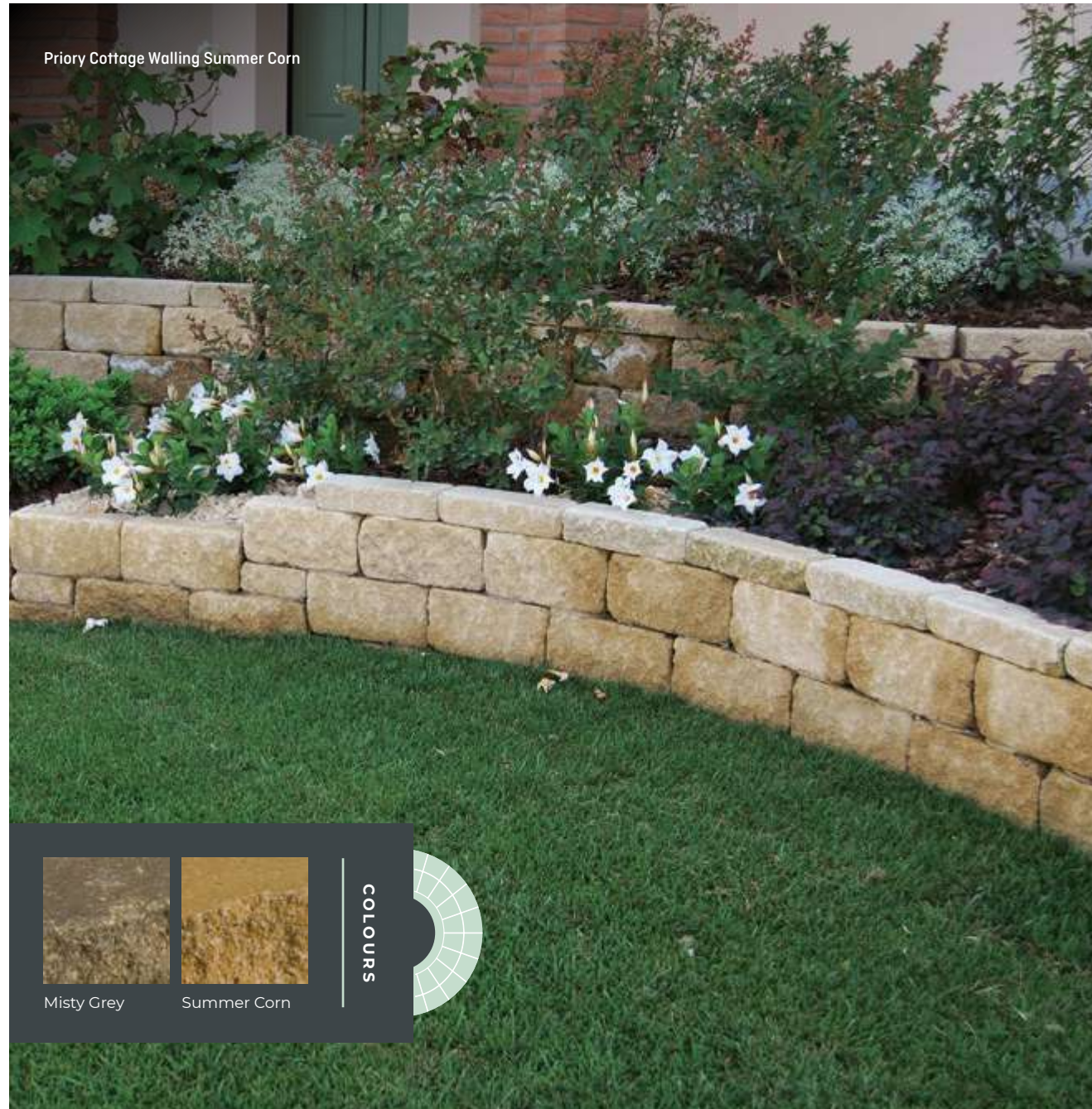


Priory Cottage Walling

## Specifications

Size	Unit / m <sup>2</sup>	Unit weight	m <sup>2</sup> / pallet	Unit / pallet	Pallet weight
220 x 65	58	2.67	6.6	374	1000
330 x 65	39	4.3	5.9	279	1200
220 x 140	29	6.47	6.1	170	1100
330 x 140	19	9.52	6.0	126	1200

Thickness: 100mm



Priory Cottage Walling Summer Corn



Misty Grey



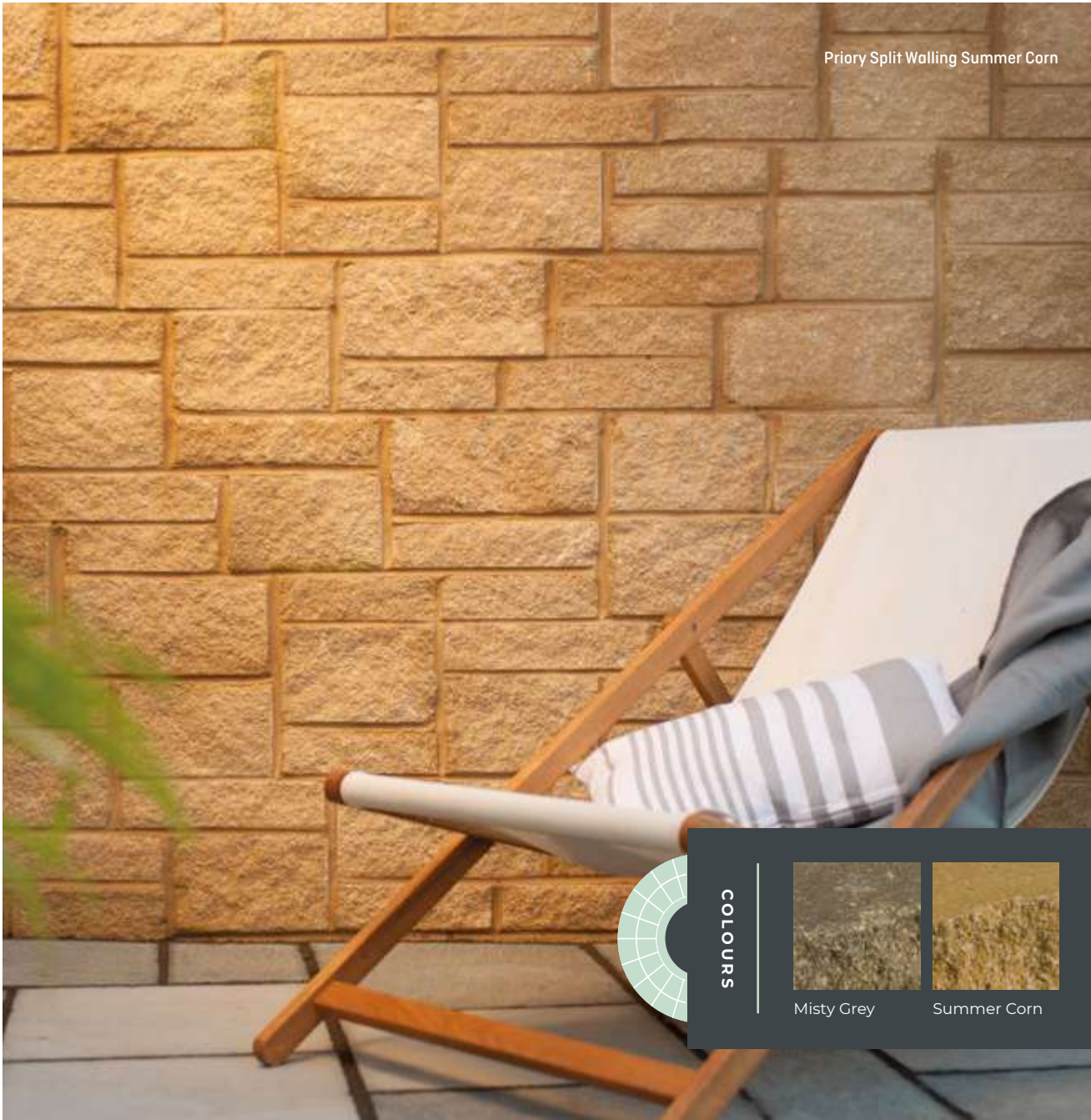
Summer Corn

COLOURS





Priory Split Walling Summer Corn



COLOURS



Misty Grey



Summer Corn

# Priory SPLIT WALLING

Similar to Priory Cottage, our Priory Split Walling range is inspired by the Cotswold Stone and is reminiscent of the countryside style.

With its traditional flat-split, rough-hewn face, this unique range will look the part in any garden.



Priory Split Walling

## Specifications

Size	Unit / m <sup>2</sup>	Unit weight	m <sup>2</sup> / pallet	Unit / pallet	Pallet weight
220 x 65	58	2.67	6.6	374	1000
330 x 65	39	4.3	5.9	279	1200
220 x 140	29	6.47	6.1	170	1100
330 x 140	19	9.52	6.0	126	1200

Thickness: 100mm

# Copings

## Dale Coping & Edging

Ideal as an edging stone or for finishing off a wall, available in Welsh Slate.

**Dale Coping**  
525mm x 160mm x 40mm



## Flat Copings

Choose from either our Meadow or Lakeland range (see pages 66 and 67 for Lakeland and Meadow Walling).



**Meadow Single Coping**  
600mm x 160mm x 40mm



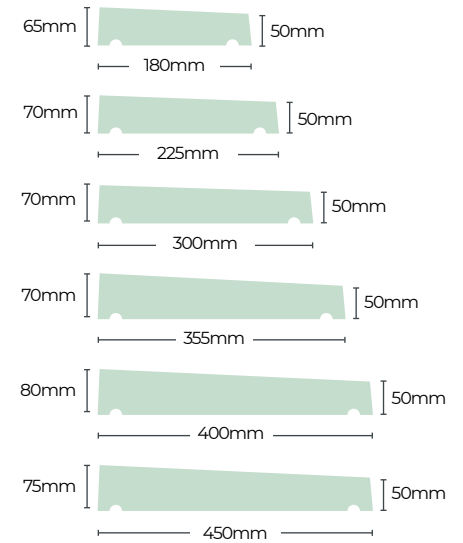
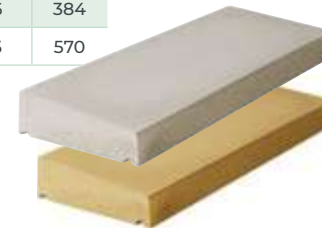
**Meadow Double Coping**  
600mm x 280mm x 40mm



**Lakeland Flat Coping**  
440mm x 150mm x 30mm

Once Weathered	Unit weight	No. Linear Mtr	Linear Mtr Pack	Unit / pallet	Pallet weight
Sizes					
600 x 180 x 65 (h)	14.5	1.66	24.1	40	580
600 x 225 x 70 (h)	24	1.66	24.1	40	960
600 x 300 x 70 (h)	24.5	1.66	12.0	20	490
600 x 355 x 70 (h)	29	1.66	9.6	16	464
600 x 400 x 80 (h)	24	1.66	9.6	16	384
600 x 450 x 75 (h)	38	1.66	9.0	15	570

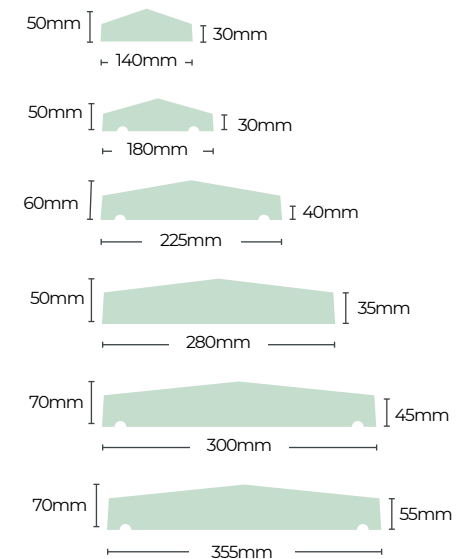
**Available in:** Portland Grey, Barley and Welsh Slate are made to order. Please ask in store.



Twice Weathered	Unit weight	No. Linear Mtr	Linear Mtr Pack	Unit / pallet	Pallet weight
Sizes					
600 x 140 x 50 (h)*	8	1.66	39.8	66	528
600 x 180 x 50 (h)	12	1.66	32.5	54	648
600 x 280 x 50 (h)*	16	1.66	24.1	40	640
600 x 225 x 60 (h)	15	1.66	21.7	36	540
600 x 300 x 70 (h)	23.5	1.66	19.3	32	752
600 x 355 x 70 (h)	29	1.66	15.1	25	725

**Available in:** Portland Grey, Barley and Welsh Slate. Larger sizes of Barley and all Welsh Slate are made to order. Please ask in store.

\*Without Drips





### Tabling

Sizes	Unit weight	No. Linear Mtr	Linear Mtr Pack	Unit / pallet	Pallet weight
600 x 300 x 50 (h)	24	1.66	12.0	20	480
600 x 355 x 50 (h)	29	1.66	12.0	20	580

**Colours:** Portland Grey, Barley and Welsh Slate are made to order. Please ask in store.

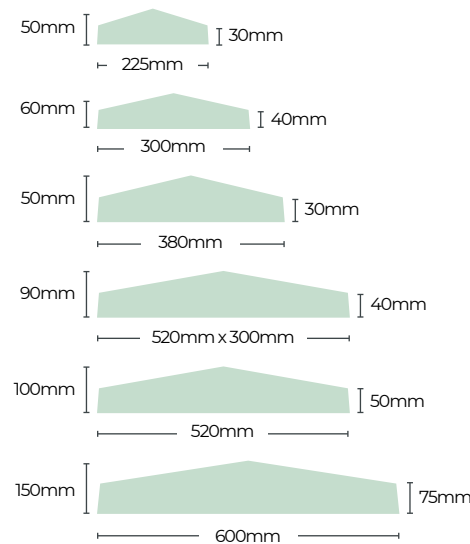
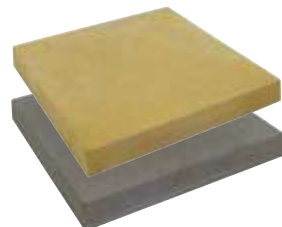


### Pier Caps

Sizes	Unit weight	Qty/m <sup>2</sup>	m <sup>2</sup> per Pack	Unit / pallet	Pallet weight
225 x 225 x 50 (h)	7	-	-	50	350
300 x 300 x 60 (h)	10	-	-	30	250
380 x 380 x 50 (h)	21	-	-	20	420
520 x 300 x 90 (h)	19	-	-	16	190
520 x 520 x 100 (h)*	50	-	-	4	500
600 x 600 x 150 (h)*	67	-	-	4	268

\*To order only

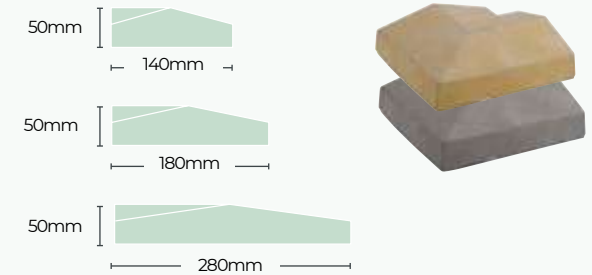
**Available in:** Portland Grey, Barley and Welsh Slate. Larger sizes of Barley and all Welsh Slate are made to order. Please ask in store.



### Coping Returns

Sizes	Unit weight	Qty/m <sup>2</sup>	m <sup>2</sup> per Pack	Unit / pallet	Pallet weight
140 x 140 x 50 (h)	3	-	-	-	-
180 x 180 x 50 (h)	7	-	-	-	-
280 x 280 x 50 (h)	10	-	-	-	-

**Colours:** Portland Grey, Barley and Welsh Slate are made to order. Please ask in store.



# Edging

Edgings not only keep walkways defined, but can also help keep your beds, gravel, soils and other aggregates in place. Edgings can also be used to define areas of your garden and to surround pathways for a clever, decorative way to separate patios or landscaped areas.

Product	Unit weight	No. Linear Mtr	Linear Mtr Pack	Unit / pallet	Pallet weight
Chesia	7	2.2	18.2	40	280
Half Rope Top	13	1.1	45.5	50	650
Rope corner	0.5	-	-	-	-
Full Scroll	11.5	1.7	23.5	40	460
Corner Dolly	1.5	-	-	-	-
Winchester	2	3.5	22.9	80	160
Victorian Scroll	3	4.3	11.6	50	150
Victorian	3	4.2	16.7	70	210
Rose Thistle	3	4.6	13	60	180
Half Round	15	1.1	54.5	60	900
Scalloped	7.7	1.7	29.4	50	385
Lakeland Kerb	12.91	1.66	12	20	258
Lakeland Gully	-	-	-	-	-
Perimeter	7.94	2.2	20	44	350



**Chesia**  
Colours: Limestone, Antique Grey  
435 x 250 x 30



**Winchester**  
Colour: Antique Grey  
290 x 175 x 20



**Rose Thistle**  
Colour: Terracotta  
215 x 190 x 25



**Lakeland Kerb**  
Colour: Cumbrian Slate  
600 x 100 x 100



**Half Rope Top**  
Colours: Terracotta, Old Red, Welsh Slate, Barley  
910 x 150 x 50  
Matching Corner Ends (Sold Separately)



**Victorian Scroll**  
Colours: Terracotta, Welsh Slate  
230 x 175 x 40  
Matching Corner Dolly (Sold Separately)



**Half Round**  
Colours: Grey, Welsh Slate, Bath Buff  
910 x 150 x 50



**Lakeland Gully**  
Colour: Cumbrian Slate  
600 x 300 x 75



**Full Scroll**  
Colours: Terracotta, Old Red, Welsh Slate, Barley  
590 x 165 x 50



**Victorian**  
Colour: Welsh Slate  
235 x 210 x 40



**Scalloped**  
Colour: Welsh Slate  
590 x 160 x 40



**Perimeter**  
Colour: Welsh Slate, Barley  
450 x 210 x 75









LANDSCAPING

# Essentials

## The finishing little touches

The Finishing Little Touches - From standard lap panels to the more ornate designs and all the extra bits and pieces that you need to enclose your green space and make it your own. Real turf, artificial grass or sleeper beds the choice is truly yours.

- 75 | Fencing
- 76 | Fencing Extras
- 77 | Turf & Artificial Grass

### IMPORTANT INFORMATION

All images shown in this brochure are for illustrative purposes only. Every effort is made to ensure accurate colour representation, however due to photographic and printing processes and varying light conditions, colours may not exactly match current production. We strongly recommend that colours are judged and chosen from actual materials and samples are sought from your local retailer.



# Fencing

## Screen Panel Range

Choose from our range of decorative fence panels. Lisbon, Madrid and Florence to complete your garden.



**Lisbon**  
1830 x 1830



**Madrid**  
1830 x 1830



**Florence**  
1830 x 1830



**Feather Edge Panel Board**  
1830 x 1800

## Lap Panel

A sturdy garden wooden fence panel, 42mm thick.



**Sizes available:**  
1830 x 1800 / 1830 x 1500  
1830 x 1200 / 1830 x 900

*Please enquire*

Gazebos, arbours and other style panels available.

# Fencing Extras



## Trellis

Thick timber panels ideal for climbing plants or creating a focal point.

### Sizes available:

1830 x 1800 / 1830 x 1510 / 1830 x 1200  
1830 x 900 / 1830 x 610 / 1830 x 320



## Treated Timber Sleepers

Our sleepers are perfect for a variety of uses including creating raised flower beds. Oak sleepers also available.



## Gravel Boards

Recessed and Plain concrete gravel boards for use with all timber panels.

**Sizes available:** 1800 x 300 / 1800 x 150



## Wooden & Concrete Posts

Choose from our pressure treated timber post or solid concrete posts.



## Metposts

We have a range of metposts for timber post support.



## Plain Gravel Boards

Recessed and Plain concrete gravel boards for use with all timber panels.

**Sizes available:** 1800 x 300 / 1800 x 150



# TURF & Artificial Grass

Our artificial grass range will give any garden a natural, luxury look but with low maintenance. We also sell a high tolerance lawn turf which is ideal if you need a hard wearing lawn.

30mm



### 30mm Artificial Grass

30mm tufted synthetic grass, soft to touch and durable making this a great all-rounder.

35mm



### 35mm Artificial Grass

35mm tufted cut pile with a super soft feel, it's an ideal choice for children and pets.

38mm



### 38mm Artificial Grass

38mm tufted pile with a luxurious look and feel, it is an ideal choice for gardens that require a bit of 'luxury'.

45mm



### 45mm Artificial Grass

45mm tufted synthetic carpet, the closest artificial grass to mimic real turf.



### Playlawn Turf

A medium texture, high wear tolerance blend of grasses, ideal for hard wearing lawns and amenity areas. Available in 1m<sup>2</sup> rolls.



PATIO  
*Construction*  
& CARE

## Start Creating

All the Do's and Don'ts to help you plan, prepare, lay and care for your patio.

- 80** | Patio construction
- 82** | Caring for your patio
- 84** | Important information







## Step 1 (Planning)

Decide where you want to lay your new patio. First sketch out the area to be paved, showing all dimensions.

Include in the drawing items such as drains, height of damp proof course, the slope or fall of the area and any other constraints eg walls, lawns, steps etc.

Visit Bowland Stone or your nearest stockist to create your laying guide using the Bowland Stone Patio Generator.



## Step 2 (Preparation)

The area to be paved must be firm and compact to avoid any subsidence. If necessary dig out any soft soil and replace with crushed stone preferably with a high dust content. The level of the ground at this stage should be approximately 55mm to 80mm below the final level of the paved area.

Poor drainage or installing paving onto an existing concrete/paved base can lead to high levels of moisture underneath the paving. This may result in discolouration/staining on the surface of the paving due to absorption of trapped water.



## Step 3

At this stage as well as a trowel and shovel, a spirit level will be needed at least the length of the longest slab that is to be laid. Determine the quantities of sand and cement required for 'bedding' the slabs on. As a guide the bed should be between 15mm and 40mm thick and mixed in a ratio of 4 parts sand to 1 part cement, (mixed together in manageable quantities either by hand or a small mechanical mixer).

Decide where to lay the first slab, this is usually a corner slab and probably at the highest point. In most cases a slope of 1:100 is adequate to enable surface water to fall away from the house. It very often helps to use string and mark out the area, which helps to keep the joints at 90 degrees to each other. Continue laying your patio following your laying guide. We recommend that all paving is laid on a full mortar bed.





## Step 4

The method of laying should be such that each slab must not bear any weight for at least one day. Care should also be taken to ensure that cement is kept off the surface of the paving as it can cause staining. The exact position of each slab should be achieved first time. To do this, do not apply excessive force on the slab but check with a spirit level and apply gentle pressure until the exact position is found. It is best to lay full slabs first and then cut any odd shapes and sizes that may be needed.



## Step 5

Unlike all the previous stages, grouting can only be done on a dry day\*. Building sand should be used, mixed at a ratio of 5 parts sand to one part cement. (\*Alternatively use a jointing compound which requires water & can therefore be used during inclement weather). Bowland Stone colour additive can be used to complement or contrast the overall appearance. The total quantity should not exceed one bucket of grout at a time. With the use of either a bricklayers pointing trowel or pointing tool, push the mix into the gaps to form a uniform surface to the pointing ensuring that it is kept slightly below the surface of the paving. Excess mix should be swept aside and re-used but do not brush it over the slabs until the mix has become dry. It is essential that the mix is moist but not wet to prevent the possibility of staining.



# Caring for your patio

The following tips should help you keep your paving looking at its best for longer.

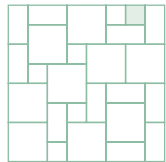
1

Regular washing and brushing should be adequate to maintain your patio.

2

Before using any cleaning materials consult your paving stockist to recommend an appropriate product.

3



Test a small area before cleaning the patio.

4

If using patio cleaner, use sparingly (once or twice during the lifetime of the patio) as this may affect durability.

5



Sealants can be used but they can affect the colour of the paving.

6



Do not use salt to de-ice your patio.

7

Dark patches are due to differential weathering and exaggerated by efflorescence\*. As with efflorescence the dark patches will generally disappear in time.

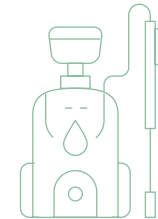
8



Fungal and algae growths can be cleared by spraying with fungicide.

9

We do not recommend the use of a pressure washer.



X

Please note that although sometimes unsightly, blemishes or stains are unlikely to affect the performance of the paving. Always follow manufacturer's instructions when using cleaning equipment or materials. \*Please refer to page 84 for further information.





# Important information

## Product Colour

All images shown in this brochure are for illustrative purposes only. Every effort is made to ensure accurate colour representation, however due to photographic and printing processes and varying light conditions, colours may not exactly match current production. We strongly recommend that colours are judged and chosen from actual materials and samples are sought from your local retailer. It is also worth noting that the colour of new products will inevitably vary compared to those which have been installed for a period of time as weathering does take place.

Natural Stone products will naturally feature more colour variation than concrete products and several samples should be obtained. Bowland Stone does not take responsibility for any colour inaccuracies within this brochure compared to the products featured.

Although every effort is made to ensure colour consistency, variations between production batches can occur, especially in blended shades. We recommend that where possible products are ordered from one batch and where multiple packs of product are ordered, thoroughly mix the products by drawing from different packs when laying.

## Sizes

Bowland paving is manufactured to capture the authenticity of natural slabs and as such they may vary in thickness. All sizes & dimensions are nominal, subject to manufacturing tolerances and are for guidance only.

It is recommended to 'dry lay' your design first starting from the centre, (especially Bowland Stone feature kits including circles, stars, octagons, & ovals), which will allow you to establish the correct spacing between each slab to ensure your design fits perfectly in the area allocated.

## Efflorescence

All quality products with a high cement content may suffer the temporary phenomenon of efflorescence. It can appear as a white powder or just an apparent lightening/fading of surface colour. It is caused by the migration of soluble salts (calcium hydroxide) through the damp paving surface which then reacts with atmospheric carbon dioxide to form calcium carbonate – a white deposit of low water solubility which is apparent as the surface dries.

Ideally it is better to let efflorescence disappear naturally, however it can be removed chemically by using propriety acid washing agents or brick/patio cleaners in accordance with manufacturer's instructions. Trials should be carried out on samples or on a limited area, in order to assess the effect on the appearance. Please note that this can alter the appearance of the concrete by changing the surface texture and may also damage the concrete surface.



### **Weathering**

Natural weathering and site conditions will also affect the appearance of paving along with seasonal manufacture or naturally occurring variations of the aggregates used in manufacturing.

Differential weathering can cause patchy, dark discolouration on the surface of individual paving slabs, due to the paving curing at different rates. This will generally diminish over time and will not affect the long term performance.

All products can develop algae and organic growths under certain environmental conditions and may require cleaning. Areas adjacent to borders, plant pots and trees may discolour from transfer of plant life. Specialist maintenance advice may need to be sought.

Bowland Stone do not recommend the use of road salt or the use of pressure washers, as both can damage the surface and appearance of the paving. Poor drainage or installing paving onto an existing concrete/paved base can lead to high levels of

moisture underneath the paving. This may result in discolouration/staining on the surface of the paving due to absorption of trapped water.

### **Health and Safety / Product Handling**

Care should be taken when handling / installing Bowland Stone products, we always recommend suitable lifting equipment or 2 person lifting on our larger size paving slabs.

- Always wear gloves and safety footwear when handling products
- Wear appropriate PPE if using cutting equipment
- Ensure products are on level ground before unwrapping and the product is supported before cutting bands to avoid breakages, chipping or damage to yourself

### **Delivered Goods**

All products must be checked upon receipt. In the unlikely event of products reaching you in an unsatisfactory condition, please contact your retailer immediately, allowing time for the rejected product to be inspected and or replaced.

Minor scuffs or bruises may occur during delivery, movement on-site and installation are generally unavoidable, in our experience these will weather in over time.

Bowland Stone cannot accept any responsibility for uplifting and relaying costs of defective products if upon inspection, it is deemed that the defect would have been apparent prior to laying.

### **Storage**

Prior to laying, it is imperative that paving is stored in a vertical position, ideally with original spacers in between paving (not stored face to face touching) and it is adequately covered. Rain/moisture can become trapped and settle between paving if left open to the elements, causing a drizzle like stain on the surface of the paving (particularly apparent in light coloured products). Bowland Stone will not take responsibility for any paving that has developed water marks/stains due to inadequate storage.

### Application

Bowland Stone products, unless otherwise stated, are primarily intended for domestic/landscape use only. Decorative paving is not recommended for use on driveways. For areas subject to vehicular use, block paving products are recommended (see pages 40-43).

### Liability

No charge is levied for this brochure and liability in respect of any statements, conditions, warranties and representations made on behalf of Bowland Stone is limited in accordance with the terms set out in Standard Conditions of Sale. While every effort is made to give sound advice, Bowland Stone cannot accept any responsibility for any loss, damage or injury as a result of following it. Bowland Stone will not take any responsibility or liability in respect of products being used for any purpose other than those for which they were intended. Due to our continuous evolution of product design and improvement, our range and specifications are subject to change without notice. Customers should check that all information is up to date.

Bowland Stone will not be liable for any fair wear and tear, wilful damage or negligence of the customer or abnormal conditions.

### Costs

Please refer to your local retailer for all up to date pricing. Please be aware that paving is just one element of the total cost of laying a patio and is rarely the largest outlay.

## Additional Product Information

### Natural Stone

Unavoidable colour and thickness variations occur within the natural stone ranges. Our natural stone is sourced from suppliers who are registered with the 'ethical trading initiative'.

Natural Stone may develop added marking, deposits or patches as mineral content oxidises. Product should be mixed from a number of packs prior to installation and should always be laid on a full wet mortar bed.

All Silver Grey Natural Sandstone products vary with differing geological conditions. Such variations can lead to small particles of ironstone within the product creating a darkening of the surface with natural weathering. This natural weathering is more obvious with Silver Grey Sandstone compared to other natural stone products due to its paler colour.

Sandstone needs to be handled very carefully when installing to minimise staining and we would advise that Smooth Natural Sandstone be sealed prior to laying using a breathable sealer. However, if this is not possible, it should be covered up as it is installed and sealed as soon as it is laid.

A slurry primer (such as Bradbond) should be applied to the underside of all Smooth Natural Sandstone, Natural Slate, Riverwashed Limestone and Granite paving prior to laying to improve adhesion.



Blue Black Limestone is UV sensitive and over time will lighten in colour. It is recommended to seal limestone prior to laying or as soon after laying as practically possible. Never use acidic based products on limestone.

### **Porcelain paving**

Manufactured from the finest raw materials, under strict controls allows for exceptional technical characteristics of full-body unglazed porcelain paving.

### **Anti-slip surface resistance**

- Arenaria, Tephra & Brooklyn porcelain paving = Class 3 / R11 / Group C

The use of a slurry primer to the reverse of each paver is both essential and more importantly critical to the overall performance of porcelain paving. Applied to the underside using a stiff brush, it provides an exceptional bond between paver and the full wet bed underneath. Mixed to

manufacturers instructions and applied with care it forms an immediate bond which prevents the pavers from lifting or potentially moving in the future when correctly laid.

We recommend a porcelain jointing compound for pointing. Do not use white cement nor materials containing black pigments. Finishes are intentionally manufactured with slightly uneven colour tones and surface decoration, these subtle variations set these products apart.

Porcelain paving can be cut on site and mostly to any size. We recommend the use of a portable saw (table saw, petrol driven disc cutter, rechargeable angle grinder) fitted with a good quality diamond porcelain blade. The blade should be water fed for dust suppression and to keep the blade cool. Scoring the product first and sawing from the face downwards will help to alleviate the potential risk of edge/surface chipping.

Porcelain paving can be cleaned by applying a suitable cleaner. We strongly recommend the finished laid area be thoroughly cleaned/washed down which helps remove general building dirt, grout residue and any grease deposits that may be present. It is also recommended that periodic cleaning with porcelain cleaner will keep the paving looking its best.

Dependent on the type of stain / surface residue present (i.e. suction marks, grease, grout, general building site dirt) there is a wide range of off the shelf specialist cleaners available. Always check the manufacturers instructions first before applying to any test area.



*we deliver*



**Bowland Stone** (Bristol)

1 Cole Road, St. Philips,  
Bristol BS2 0UG

**t: 01179 557530**

e: [bristol@bowlandstone.com](mailto:bristol@bowlandstone.com)

**Bowland Stone** (Macclesfield)

Nab Works, Long Lane, Pott Shrigley,  
Macclesfield, Cheshire SK10 5SD

**t: 01625 574634**

e: [manchester@bowlandstone.com](mailto:manchester@bowlandstone.com)

Find even more inspiration at [www.bowlandstone.com](http://www.bowlandstone.com)



Made in the UK by  
Bowland Stone